

INVESTMENT DESTINATION

PLOVDIV

2021/2022

INVESTMENT DESTINATION

PLOVDIV



**PUBLISHED BY
PLOVDIV MUNICIPALITY**

Copyright 2021 Plovdiv Municipality

WELCOME TO PLOVDIV



Zdravko Dimitrov

Mayor of Plovdiv

As the Mayor of Plovdiv, I am proud to introduce the 2021/2022 edition of the "Investment Destination Plovdiv" booklet.

This may be your first encounter with Plovdiv or you could be updating previously known facts about the region. In any case, it is just the first step of a journey that my team and I will join you in.

- **Plovdiv is the biggest industrial center** of Bulgaria with over 71 000 jobs in manufacturing.
- Trakia Economic Zone hosts **over 200 multinational and local manufacturers.**
- A local economy with predominant business profile - **close to 70% of all value added is created in manufacturing and B2B services.**
- **IT&BPO are the fastest growing sectors** - outnumbering 7000 jobs and a 7.6% annual growth of productivity.
- **Expanding talent pool** – 35 000 university students, positive migration balance and a growing expat community of 20 000 people.
- **Population of nearly 800 000** (metropolis) with a predominantly young profile.

1

KEY FACTS

Why Plovdiv?

2

DOING BUSINESS IN BULGARIA

Economic freedom in a rising EU member

3

INVESTOR INCENTIVES

Single point of contact for an easy setup of operations

4

LOCAL ECONOMY

One of the biggest manufacturing clusters in Central & Eastern Europe

5

LABOR MARKET

Positive net migration and an expanding pool of talent

6

MANUFACTURING

Automotive and discrete manufacturing center

7

MAJOR INVESTORS

List of multinational & local industrial companies

8

EDUCATION

Diverse ecosystem of high schools and universities

9

IT&BPO

Fastest growing sector attracting global talent to the city

10

PROPERTY MARKET

Network of modern industrial & tech parks and office centers

11

PUBLIC SERVICES

Fast improving utilities infrastructure

12

QUALITY OF LIFE

Great work-life balance, unique vibe and rich range of cultural, sport and leisure activities

Bulgaria is a member of:



EUROPEAN UNION

Since 2007

EU BANKING UNION

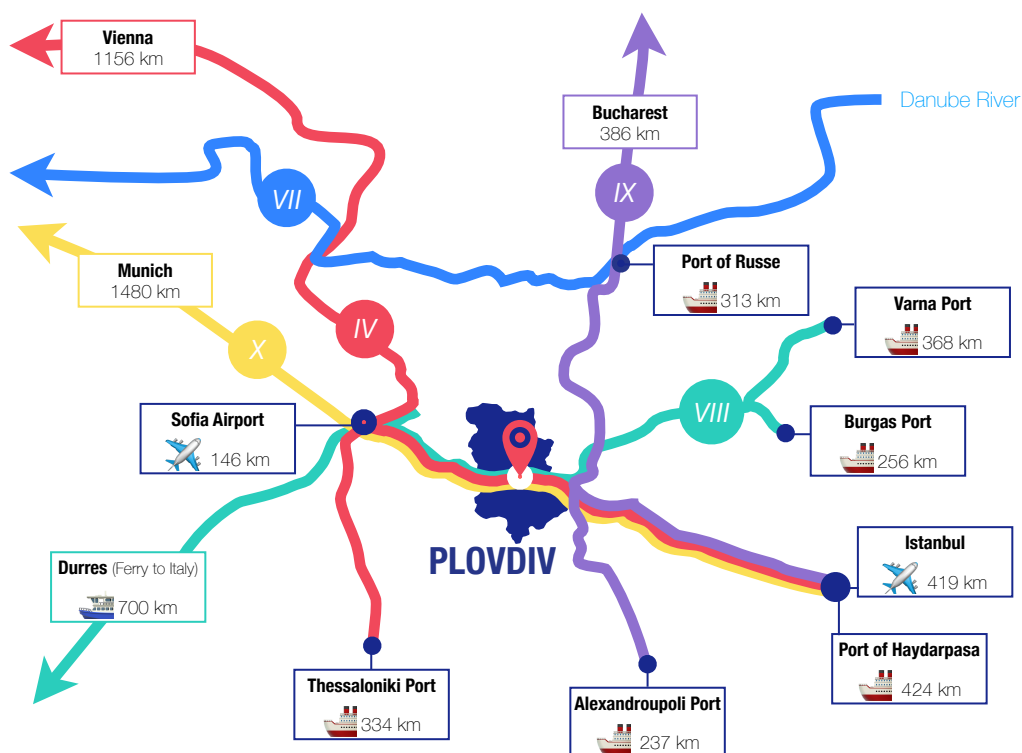
Since 2020

ERM II

& has a fixed rate to €

NATO

Since 2004



Why Plovdiv?

CENTER OF A
REGION

**with a population
of 795 000 and
19 500 expats**

HIGH QUALITY
OF LIFE

**and great
work-life balance**

#1 INDUSTRIAL
LEADER

**in Bulgaria with
over 71 000 jobs**

HIGHLY
DEVELOPED
CLUSTER

**of discrete
manufacturers**

BOOMING
IT&BPO
DESTINATION

**with over 7000
jobs**

LEADING
UNIVERSITY
CENTER

**with over 35 000
students**

INTERNATIONAL
SPOTLIGHT

**for investors and
digital nomads**

Among
Top 10
mid-sized cities
with best
FDI strategy and
cost-effectiveness

SINGLE POINT
OF CONTACT

**and an all-in
service package
for investors**

fDi Intelligence

Macroeconomic numbers

€60.6 billion

GDP

€34.0 billion

EXPORTS

€9100

GDP PER CAPITA

€33.0 billion

IMPORTS

68.5%

**EMPLOYMENT
RATE**

110.6%

**EXPORTS &
IMPORTS**

(as % of GDP)

Global
Competitiveness
Index

49

(out of 141)

World Economic
Forum, 2019

ERM II

The last checkpoint before joining the Eurozone, which is expected to happen in 2024

BANKING UNION

Protects taxpayers by means of a single European banking supervision system and a single bank resolution mechanism

€

The local currency lev has been fixed to the euro since 1997 through a currency board

Investment climate

Economic freedom

32

(out of 162)

Fraser Institute, 2020

Sound money

22

(out of 162)

Fraser Institute, 2020

10%

**FLAT CORPORATE &
PERSONAL INCOME
TAX RATE**

5%

**WITHHOLDING TAX
ON DIVIDENDS
DISTRIBUTED TO
NON EU/EEA
COMPANIES**

20%

VAT

34.8%

**TAXES ON LABOR
AS % OF LABOR
COSTS**

€18 400

**MAXIMUM ANNUAL
SOCIAL SECURITY
BASE**

Governments maintain fiscal policy with low deficits or even surpluses

25.0%

**GOVERNMENT DEBT
(as % of GDP)
2nd LOWEST IN EU**

1.7%

INFLATION

-3.4%

**BUDGET DEFICIT
(as % of GDP)
-6.9% EU ON AVERAGE**

Financial incentives representing regional state aid

Tax relief

Financial support of up to 25% for the vocational training for obtaining professional qualifications, of persons, who have occupied the new jobs linked to the investments

Reimbursement of social security and health insurance contributions paid by the employer (18.9% of the gross wages) for a period of up to 2 years

Providing a grant of up to 10% of the total investment cost

Introducing exemption from the obligation of paying stamp duty upon alteration of the assigned use of the land

Financial support for construction of technical infrastructure elements to the borders of the project site (used exclusively by the investor)

Acquiring ownership rights or building rights over real estate at prices lower than the market ones (but not lower than the tax assessment)

Importing assets without effective payment of import VAT

Non-financial incentives

Shortened waiting time for administrative services, provided by the central and local government authorities

Individual administrative and information services

Interdepartmental task force for institutional support

Establishment of public-private partnerships with municipalities, universities and other organizations

Acquiring real estate (private state or private municipal property) without an auction or a competitive bidding procedure

Plovdiv Municipality provides investors with a single point of contact & an all-in package of services, including preliminary researches and consultations, staff recruitment support, local media promotion, etc.

👉 invest.plovdiv.bg

✉ invest@plovdiv.bg

Maximum financial incentives intensities under European Commission regulation

For projects with expenditures below €50 million	50% of the total investment cost
For projects with expenditures above €50 million	Maximum aid amount = $50\% \times (50 + 0.5 \times B + 0.34 \times C)$ B is the part of eligible costs between €50-100 million C is the part of eligible costs above €100 million
Example: Semiconductor manufacturer with €170 million total investment cost	Maximum aid amount = $50\% \times (50 + 0.5 \times 50 + 0.34 \times 60) =$ €95.4 million

Threshold for special investment status for mechatronics & automotive companies




Priority	Class A	Class B
€15.3 million	€2 million	€1 million

 For more information visit www.investbg.government.bg

In the coming years Plovdiv municipality will implement projects making the industrial parks easily accessible & faster, including:

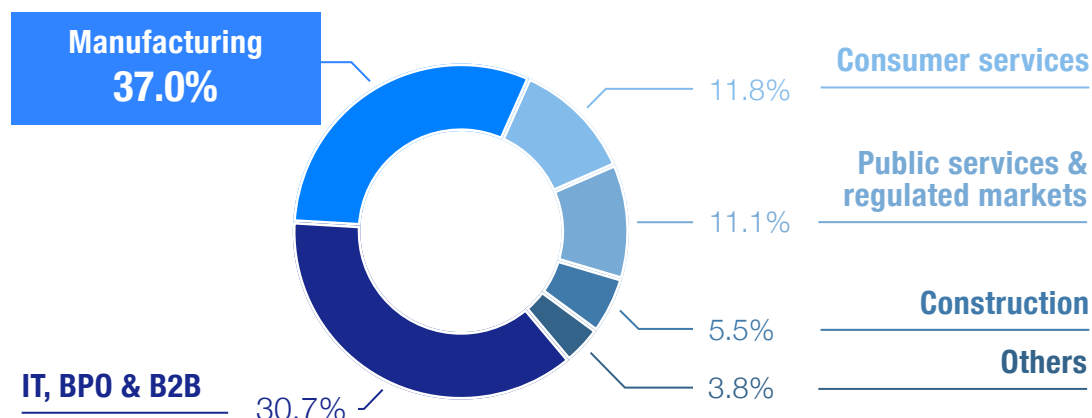
- Modernizing the railway to support high-speed international trains
- Completion of the Plovdiv ring road
- Development of city train network (S-Bahn), connecting Plovdiv and its industrial parks
- Construction of a road underpass under the Plovdiv Railway station

Volume & structure

			
	Plovdiv district	South-central region	Bulgaria
SALES REVENUES (billion €)	€15.9	€23.0	€155.3
VALUE ADDED (billion €)	€4.0	€6.2	€42.4
NUMBER OF JOBS (thousand)	204	355	2074

Manufacturing and business services account for over 2/3 of the local economy

Local economy structure
(by added value)



Investments & productivity

€915 million

**FIXED CAPITAL
EXPENDITURES IN
2020**

8.6%

**ANNUAL GROWTH
OF PRODUCTIVITY**

(2014-2020 average)

5.6%

**ANNUAL GROWTH
OF INVESTMENTS
PER JOB**

(2014-2020 average)

€19 900

PRODUCTIVITY

(Value added per job, 2020)

€38 600

**VALUE OF FIXED
ASSETS PER JOB**

(2020)

Source: TEZ with NSI and Commercial register data for Plovdiv district

#1 in approved non-residential construction for 2020

355 000 m²

(3.8 million ft²)

approved for non-housing
construction in 2020

17.1%

of all permits in the country

740 000 m²

(8 million ft²)

approved for housing
construction in 2020

19.8%

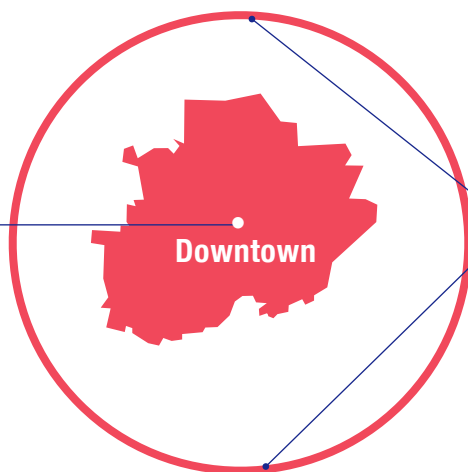
of all permits in the country

Source: NSI with data on district level for 2020

Population

534 000

**30 min. from
downtown**



795 000

**45 min. from
industrial
zones**

Population by age in wider Plovdiv (distance 45 min.)

Under 20	20-44	45-64	65-74	75+
157 000	252 000	220 000	94 000	72 000

Regions with
biggest share in
migration towards
Plovdiv district

16.1%

Sofia (capital)

8.5%

Pazardzhik

7.8%

Smolyan

27.9%

Other countries

9000

NEW INHABITANTS

(city)

+5100

NET ANNUAL

CHANGE

(district)

16.3‰

NET MIGRATION

10-29 YEARS

(district)

19 500

EXPATS

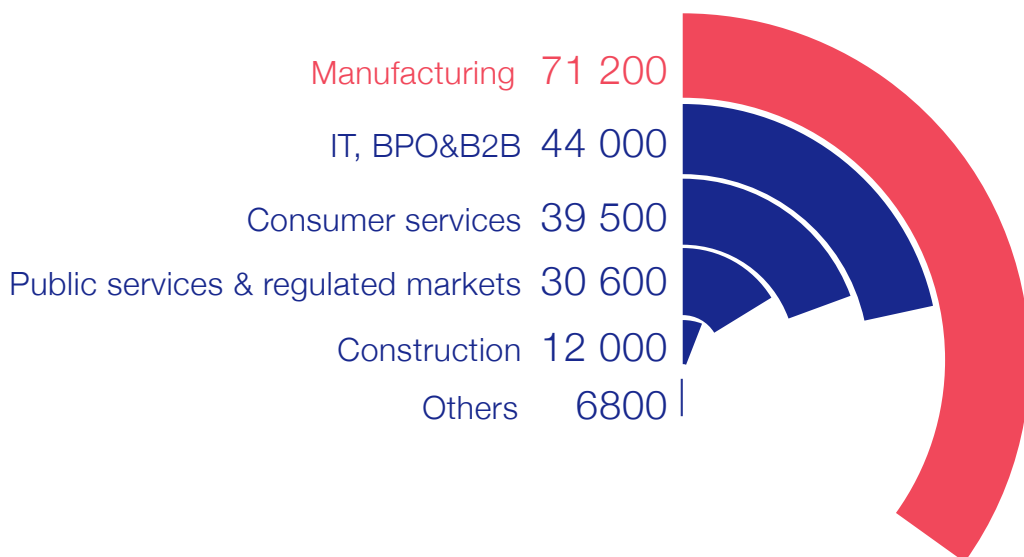
(residing in the district
for more than 3 months)

Number of jobs

Plovdiv is the industrial leader in Bulgaria with 15% of all manufacturing jobs in the country

Local economy structure

(by number of jobs)



Number of jobs created by foreign-owned companies

19 700

MANUFACTURING

3 700

IT, BPO & B2B

3 700

OTHERS

Source: Trakia Economic Zone with NSI and Commercial register data for Plovdiv district, 2020

Industrial labor pool in closest districts

Stara Zagora	Pazardzhik	Haskovo
31 700	19 600	14 100

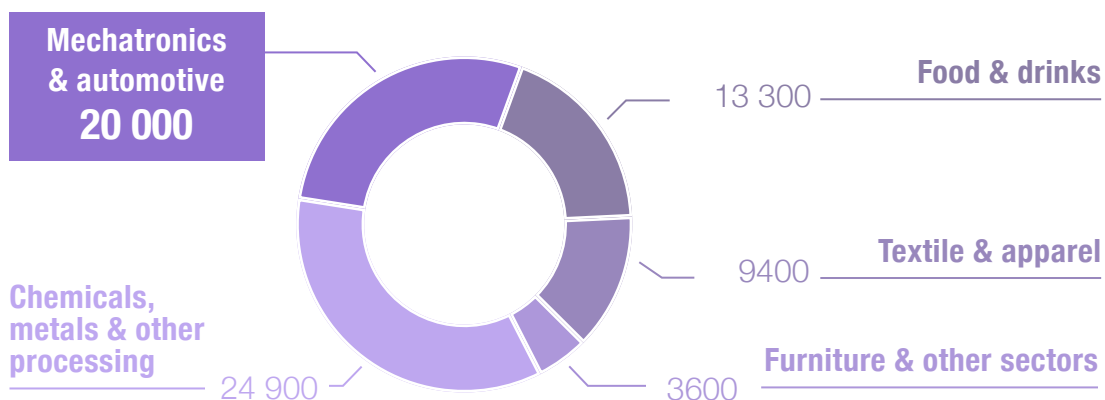
Source: TEZ with NSI and Commercial register data on district level, 2020

Industry snapshot

Manufacturing

	SALES REVENUES	VALUE ADDED	NUMBER OF JOBS
Volume	€5.9 BILLION	€1.5 BILLION	71 200
Share in local economy	36.8%	37.0%	34.9%

Structure of manufacturing
(by number of jobs)



Change in manufacturing structure for the past 6 years
(in percentage points)

Mechatronics & automotive	Chemicals, metals & other processing	Food & drinks	Textile & apparel
↑6.1	↑3.8	↓2.2	↓7.8

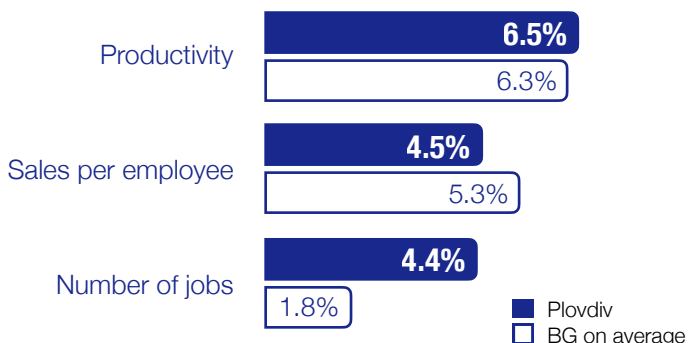
Source: TEZ with NSI and Commercial register data for Plovdiv district, 2020

The rise of
mechatronics &
automotive in
Plovdiv

Productivity

114.6

Index BG = 100



Average annual change for 2014-2020

Relative labor cost

(mechatronics & automotive = 100)

Chemicals, metals & other processing	Food & drinks	Textile & apparel	Furniture & other sectors
87.6	71.1	57.8	80.6

Mechatronics & automotive

	SALES REVENUES	VALUE ADDED	NUMBER OF JOBS
Volume	€1.7 billion	€446.5 million	20 thousand
Share in local manufacturing	28.8%	30.6%	28.1%
Plovdiv's share in Bulgaria	24.2%	20.8%	17.7%

Source: TEZ with NSI and Commercial register data, 2020

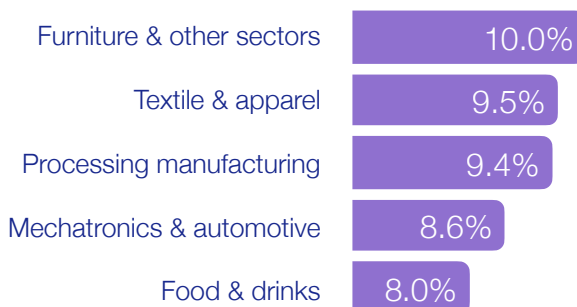
Wages

JOB POSITION	Gross wages	Total labor cost
Production assembly worker		
€/Month (2022 Forecast)		
• Entry level	580	690
• Skilled workers	750	890
CNC machine operators		
• Entry level	650	770
• Skilled workers	930	1110
Welders, lathe and metal workers		
• Entry level	770	920
• Skilled workers	1230	1460
First-line managers & supervisors		
• Entry level	910	1080
• Skilled workers	1250	1490
Engineers (electrical & machines)		
• Entry level	870	1030
• Skilled workers	1240	1470

Source: TEZ based on survey of net pay among employers

Total labor costs include **gross wages plus 18.9%** mandatory social security contributions paid by the employer

Annual growth of labor cost (2014-2020 average)



Source: TEZ with NSI and Commercial register data, 2020

TRAKIA ECONOMIC ZONE

ECO INDUSTRIAL PARK

*Carbon neutral
by 2030*

GREEN INFRASTRUCTURE & SERVICES

Renewable Energy
Water & Waste Management
Smart Buildings Construction
Electric Transport
Data Center

ECO SMART FACTORIES

- Efficient
- Competitive
- Sustainable



Knowledge Process Outsourcing
Industrial Internet of Things
Prototyping & 3D Printing
Data Science Services

TECHNOLOGY ECOSYSTEM

*Applied Research Center • Universities
StartUp Accelerators • Tech Vendors*



Plovdiv district

AUTOMOTIVE, MACHINERY & ELECTRONICS

ABB Bulgaria	Hannon Systems	Maxcom	Stratus
Aiger Engineering	Index - 6	Mecalit Bulgaria	Techno Aktas
Andi BG	ITW Appliance Components	Milara International	Televic Bulgaria
Asel	Katek Electronic	Odelo Farba	Tomika - Metal
Ataro Klima	Kittner	Philcab	Viking Life Saving Equipment
Biomashinostroene	Latecoere	Sanmina	Watts Industries
Bonner	Leader 96	Schneider Electric	Willi Elbe
BTL Industries	Liebherr Hausgeratte Maritsa	Sensata Technologies	William Hughes
Bulltek	Liebherr Transportation Systems	SKF Bearings	Wurth Elektronik
Diko	LMP Bulgaria	Spinner	etc.

INDUSTRY SUPPLIERS

ADL	Gotmar	Kaskada	Schatti Bulgaria
Angel Stoilov - 96	HIK-91	KCM	Tempodem
Assenova Krepост	HMC	Mondi Stamboliiski	Teolino Plast
BA Glass Bulgaria	Hus	Moni MG	VMZ
Cast Futura	Intrama	Pentax Medical Bulgaria	Vodstroj
Cimcoop	IPO	Poligroup	Yuriy Gagarin
Dunapack Rodina	ITD	Profilink	Zinkovi Pokritia 2
Fort	Kalcit	Sage Technologies	etc.

Closest regions to Plovdiv (less than 100 km)



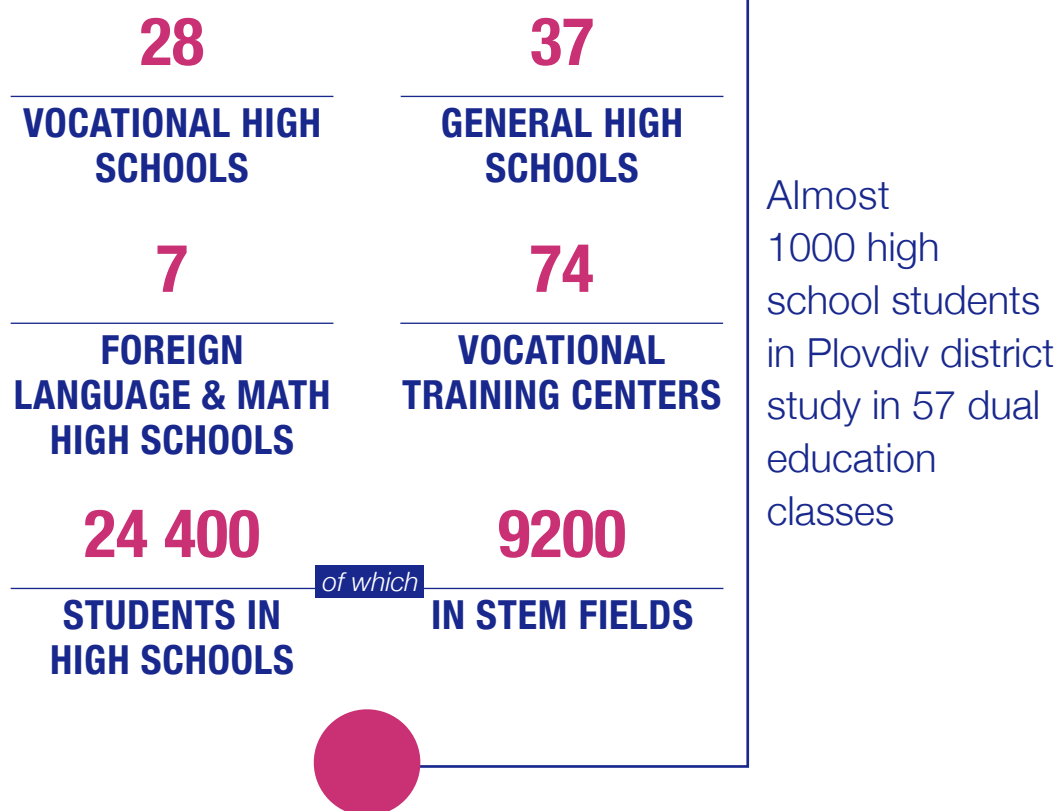
AUTOMOTIVE, MACHINERY & ELECTRONICS

Arkomat	Energoremont Galabovo	Micro View Endoscopie Optik	Stimex
Astroida	Hraninvest-Hranmashkomplekt	Optix	Superabrasive
Badeshtnost	Kauchuk	Oskar Ruegg Bulgaria	Veas Bulgaria
Bultech - 2011	Kolovag	Pim	Videoton Bulgarian Holdings
Bunay	Kostal	Preskov	VT Bulplast
Caproni	M+S Hydraulics	Rodina Haskovo	Yazaki Bulgaria
Donido Machine Industry	Matrix Pack	Scholly Optics	Zavod za Optika
Elhim Iskra	Micro Optics Europe	Standard Profile	etc.

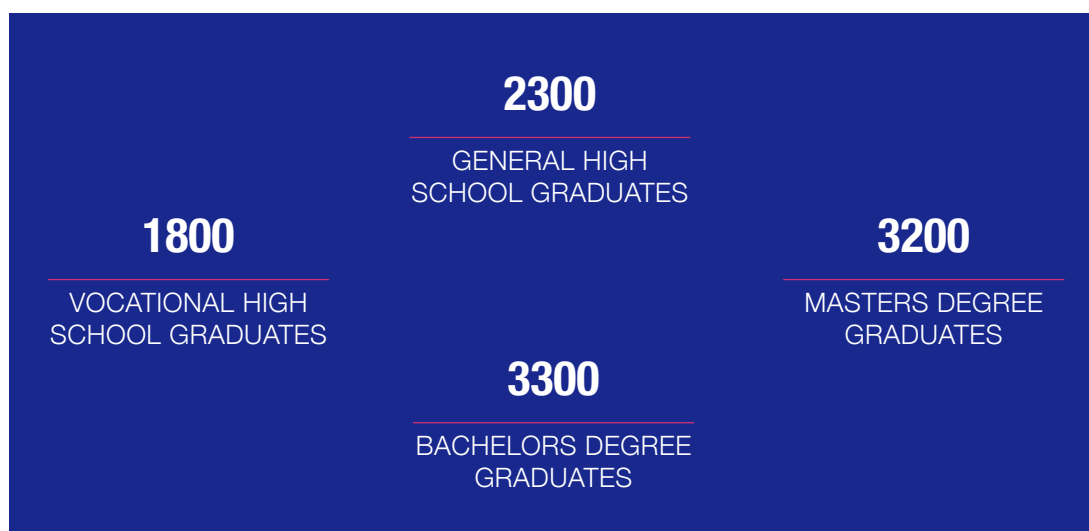
INDUSTRY SUPPLIERS

Ab	Guala Closures	MM Mechanics	Rofix
Ate Plast	Gudex	Neochim	Smurfit Kappa Bulgaria
Bulhart	Industrial Solutions Bulgaria	Panchim	Technoengineering
Damiana	Kastamonu	PFB Preso Fondal	Tron
DS Smith	Metalic	Progress	Zavod za Pruzhini
Ecoinvest	Metalinvest - Remko	Promet Safe	etc.

Plovdiv and its closest regions form the biggest mechatronics & automotive cluster in Bulgaria. Plovdiv also has a well-developed consumer products industry, hosting some of the biggest food & drinks producers in Bulgaria, including Kamenitza, OMK, VP Brands, Nova Trade, Simid, Dimitar Madzharov, etc.



Source: Regional Department of Education, NSI, MoE, NAVET (data on district level for 2020/2021)



Source: NSI (data on district level for 2020)

8

UNIVERSITIES

35 300

STUDENTS

3300

FOREIGN
STUDENTS

Students enrolled in technical studies

Information technologies	1790
Communication & computer technologies	1030
Mechanical engineering	600
Electrical engineering, electronics & automation	570
General engineering	460
Energy studies	120
Transport, navigation & aviation	180
TOTAL	4750

Top 5 biggest universities in Plovdiv

UNIVERSITY	Number of students	Major fields
Plovdiv University	14 300	Business services; Language studies; Information technology & computer science
Medical University of Plovdiv	6400	Medicine; Dental medicine; Healthcare
Agricultural University of Plovdiv	3300	Agronomy; Plant protection
University of Food Technologies	3300	Food & beverages technologies; Machine building
Technical University of Sofia - branch Plovdiv	2100	Electronics & automation; Mechanical engineering

Industry zoom

The rise of IT & outsourcing sector in Plovdiv

Number of employees
7000+

Labor cost
83.7

Index Sofia = 100

Average annual growth for 2014-2020

25.2%

SALES REVENUES

24.9%

VALUE ADDED

7.7%

**AVERAGE SALES
PER JOB**

7.6%

**VALUE ADDED
PER JOB**

+15.2%

NUMBER OF JOBS

+13.4%

LABOR COST

Source: TEZ with NSI and Commercial register data

University students in IT&BPO related fields

4700

FINANCES,
ACCOUNTING &
LEGAL

2800

COMPUTER
SCIENCE

3400

BUSINESS
MANAGEMENT &
ADMINISTRATION

Source: Plovdiv universities (data for 2020/2021)

Attracting global talent

Plovdiv has a vibrant community of some 20 000 expats from over 130 different nations

EU citizens

UP TO 5 YEARS	Long-term residence validity (issued in 24 hours)
PERMANENT RESIDENCE	Issued after the initial period
TRANSFERABLE	Social security schemes between countries
NO RESTRICTRIONS	On buying property
NATIONAL DRIVER'S LICENSE	Valid throughout the stay

Non-EU citizens

EU BLUE CARD	Issued to professionals with valid work contract & long-term visa
UP TO 4 YEARS	EU blue card validity (issued in up to 7 days)
STARTUP VISA	For entrepreneurs developing high tech and/or innovative projects
LLC NEEDED	To buy property with land shares
NATIONAL DRIVER'S LICENSE	1 year validity

Source: TEZ, Foreigners in Republic of Bulgaria Act, insurance companies, europa.eu

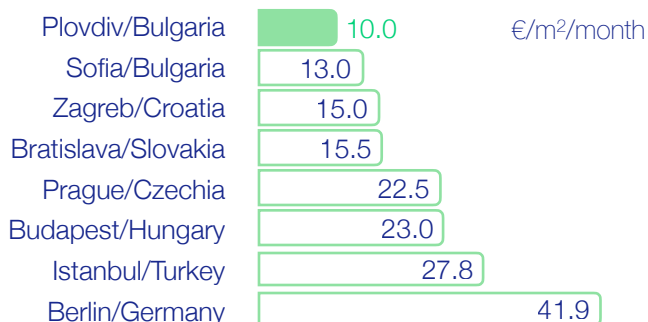
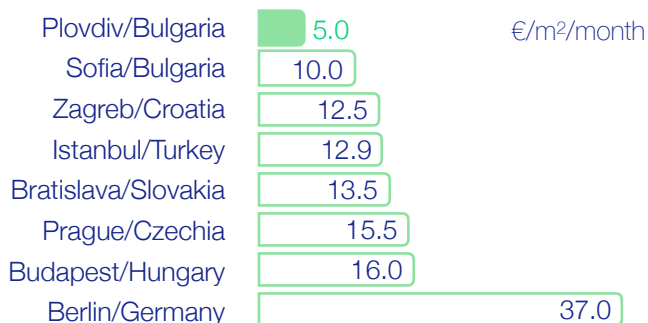
Ecosystem

Over 200 IT&BPO companies are located in Plovdiv

60K	BPO Bulgaria	Dllago	Hosting Well Done
A Data Pro	Bro Group	DNH Soft	HR Partners
ABB SSC	Broadcom Bulgaria	Donatix	HRS Bulgaria
Accenture Bulgaria	BS Technologies	Easy Consult	HRS Group
Adastra Bulgaria	Bulanet	Elders	IBS Bulgaria
Adecco Bulgaria	Bulpros Consulting	Enigma Software Group	ICYGEN
Admin Corporation	Bulwork Company	Enter CRM	IKOM
Advise Tech	Cloudtech	Enterprise Security Solutions	Infinite Lambda
Amexis	CNSys	Europe and International BPO	Innotec International
APT Systems	Code Coda	Euroweb	Intech Group
Arcade Retail	Code Nest	Evolink	Intelligent Systems Bulgaria
Aryxe (Bulgaria)	ConsultCommerce	Football Radar	InterConsult Bulgaria
Ascent Services	CoreTech Bulgaria	Gamaflow	IT Akademia
Atra BV	CRA Services	GI Group	Kodar
BankSoft	Dak-22	GPS Systems Bulgaria	Lead Consult
BDC Bulgaria	Data Network International	Hemisphere Commerce	Lift HR Solutions
BG Marketing 2010	DATA+	Hi Way Jobs	M+W MediaNetworks
BGO Software	Delta Source	Horizons Bulgaria	Manpower Bulgaria
Bica Services	Digistore 24	Hosting Solutions	Marketing Pragmatic

Master Plan	Podix	Sirma Business Consulting	Triera Soft
Media IT Services	Prime Holding	SIS Technology	Trio Interactive International
MentorMate Bulgaria	Programista	SiteGround Hosting	TSD Services
Modis Bulgaria	ProxiAd Bulgaria	Smarter	TTEC Eastern Europe
Moon BG	Quality House	Soft To Run	UNIQA Software - Service Bulgaria
NetGuard	Real Time Games Development	Softart BG	Vertinity Ltd.
Niset	Repulse	Speed	Vereign Labs
Novarto	Retail Direct	Speedflow Communications	Viking Lifesaving Equipment GBS
Office-21	Reward Gateway (UK) Ltd. - Branch Bulgaria	SQA Service	Viscomp
OptiCentre	Risco Group	Stanga	Visrez
Orak Engineering	SBND Technologies	Stemo	VKA Solutions
ORM.Bg	SBTech (Global) Limited - Bulgaria Branch	Strypes	VSG Bulgaria
Outcons	Scale Focus	Sutherland Global Services Bulgaria	Web X
Outdooraholics BG	Sciant	TechHudle	Westernacher Consulting
Oworkers	Seeburger Informatik	TechnoLogica	Wool Premium
Pasha Trading Consultancy	SelMatic	Technology Solutions 2018	You Plus We
Pastel Studios	Sensata Technologies Bulgaria	Telus International	Zephyr Group
Pentagon Interactive	SFB	TN Global	Zingasoft
Plutus BG	Sibiz Bulgaria	Trenkwalder	etc.

Office space

9-12 €/m²Monthly rents for
office class A**Rents of prime office space****Rents of class "B" office space**

Source: TEZ, Colliers, 2021

Major office centers**Business Centre Angelov**

businesscentreangelov.com

PIMK Office Center

pimkbuild.bg

Capital City Center

capitalcitycenter.bg

Plovdiv Plaza

plovdivplaza.bg

Capital Trade Center

capitaltradecenter.bg

Regus

regus.bg

Kamenitza Office Park

kamenitzapark.bg

Rilon Center

rilon-center.business.site

Office Park Plovdiv

officeparkplovdiv.com

Royal City Business Park

galaxy-bg.com

Major co-working places**Cat & Mouse Coworking**

catandmouse.bg

Colorking

colorking.com

Ji4ka

ji4ka.com

Networking Premium Coworking

networking.space

Regus

regus.bg

Industrial zones

25-40 €/m²

Price of land for industrial use

3-5 €/m²

Monthly rents for industrial space

2700 acres

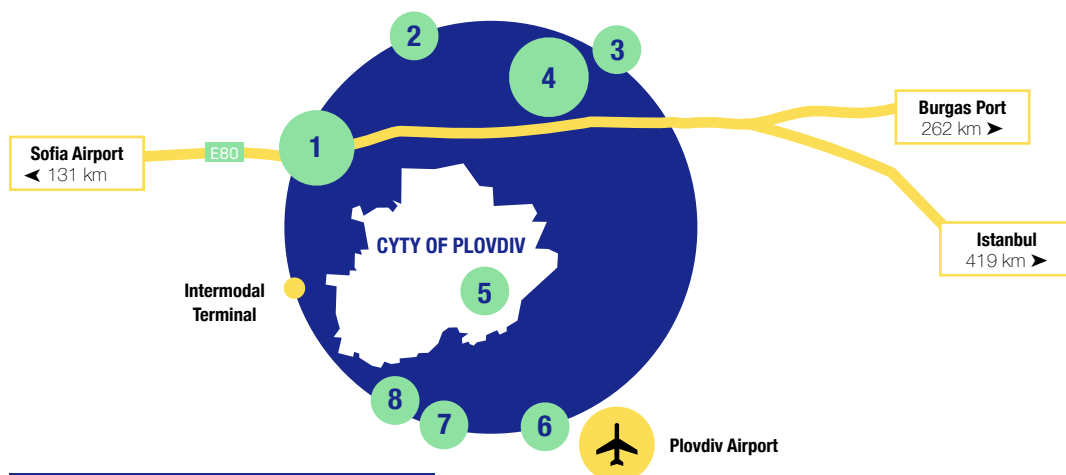
Land for industrial use

Rents of warehouse space

Plovdiv/Bulgaria	4.0	€/m ² /month
Bucharest/Romania	4.2	
Sofia/Bulgaria	4.7	
Bratislava/Slovakia	4.7	
Prague/Czechia	4.8	
Warsaw/Poland	4.9	
Budapest/Hungary	5.0	
Berlin/Germany	8.3	

Source: TEZ, Colliers, 2021

€2 billion worth of investments in industrial & tech parks



Build to suit options available

1	Maritza Industrial Zone tez.bg	5	Industrial Park Plovdiv tez.bg
2	Agro Center Kaloyanovo tez.bg	6	Kuklen Industrial Zone tez.bg
3	Rakovski Industrial Zone tez.bg	7	Logistic Industrial Park Rodopi lip-rodopi.com
4	High-tech Park Innovations tez.bg	8	Industrial Park Markovo industrialparkmarkovo.com

Access to utilities

The entire Plovdiv region has a modern power distribution grid

ELECTRICITY

Annual consumption in mWh, up to	20	500	2000	20 000	70 000	150 000	150 000+
Final price, incl. VAT, EUR/kWh	0.128	0.115	0.101	0.095	0.089	0.076	0.0763

Source: NSI, H2 2020

There are 8 exit points of the transit network, allowing to connect large industrial users to the grid

NATURAL GAS

Annual consumption in GJ	1000	10 000	100 000	1 000 000	4 000 000
Final price, incl. VAT, EUR/GJ	9.816	8.618	6.718	4.918	4.554

Source: NSI, H2 2020

In 2020-2021 projects worth over €100 million have been launched since 2020 in the region of Plovdiv region for reconstruction and rehabilitation of the water supply grid and waste-water collection

WATER AND SEWAGE

Level of contamination	I	II	III
Final price, incl. VAT, EUR/m ³	1.198	1.360	1.523

Source: Water&Sewage Plovdiv, 2021

New clients pay for any additional costs for new construction and expansion of the water supply and sewage network

Local taxes & fees

The property value for tax purposes is the higher between the balance-sheet value or the administrative valuation of the asset

	Plovdiv city	Industrial zones
Property tax	0.18%	0.15%-0.24%
Waste fee	per quantity or 0.53%	per quantity

Source: Municipalities Plovdiv, Maritza, Rakovski and Kuklen, 2021

New industrial plant
in Maritza Industrial Zone with:

4500 m²/48 500 ft²

built up area

&

€1 800 000

property value

Example calculation

€2700

PROPERTY TAX

€3600

WASTE FEE

Plus 0.2% fee
(of property
value) for
cleaning of
public areas

Bigger
containers

(1100 liters/290 US gallons)

€26.6

**PER CONTAINER
PER COLLECTION**

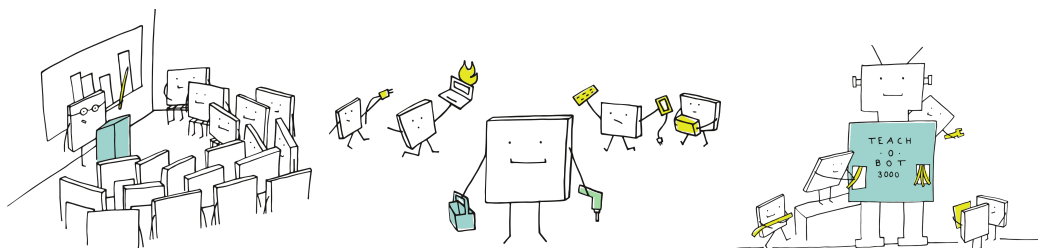
Smaller
containers

(240 liters/63 US gallons)

€5.8

**PER CONTAINER
PER COLLECTION**

Source: Maritza Municipality, 2021



EDUCATION & INDUSTRY BOARD



Industry partners in the 2021/2022 program for
career orientation & motivation of primary
school children

One Passion.
Many Opportunities.
LIEBHERR



Join the board in 2021/2022: ei-board.org

Sports & recreation

17

**STADIUMS &
MULTI-SPORT
CENTERS**

65

**SPORT HALLS &
FIELDS**

141

SPORT CLUBS

2200 m

REGATTA VENUE

52 km

BIKE LANES

3

**HILLS FOR HIKING
IN THE CITY**

40+

Sport events &
competitions
including

European women's
volleyball championship

International cycling
tour of Bulgaria

Plovdiv triathlon

Grappling tournament

Source: Plovdiv Municipality

Great opportunities to spend more time outdoors with
family and friends

300

SUNNY DAYS

76

PARKS & GARDENS

2190 acres

PUBLIC GREEN
SPACES

Average	Jan	Feb	Mar	Apr	May	Jun	Jul	Aug	Sep	Oct	Nov	Dec
Low in °C	0	1	3	8	12	15	17	17	14	10	5	1
High in °C	8	9	13	19	24	27	30	30	26	21	15	9
Low in °F	32	34	37	46	54	59	63	63	57	50	41	34
High in °F	46	48	55	66	75	81	86	86	79	70	59	48

Source: meteoblue.com

Childcare & medical services

100% of Plovdiv municipal schools use the top learning platforms G-suite for education and Microsoft Office 365

81

KINDERGARTENS & NURSERIES

2

MUNICIPAL KIDS & YOUTH CENTERS

2

COMMUNITY CENTERS FOR KIDS WITH SPECIAL NEEDS

49

SCHOOLS PROVIDING PRIMARY EDUCATION

1

INTERNATIONAL SCHOOL

(providing Cambridge primary curriculum & IB diploma program)

Source: Plovdiv Municipality

Plovdiv hosts the largest medical center in Southern Bulgaria

23

HOSPITALS

182

CLINICS & OTHER
HEALTH CARE
FACILITIES

€160

PER YEAR
VOLUNTARY PRIVATE
HEALTH INSURANCE

Plovdiv has the highest density of doctors among the municipalities with population over 150 000 inhabitants

Per 10 000 inhabitants

85

Doctors

&

24

Dentists

Source: NSI (data on municipality level for 2020), Insurance companies

Cost of living

Typical prices in Plovdiv for everyday items



Lunch menu

€5.10



Public transport (one-way ticket)

€0.51



Public transport (monthly pass)

€25.00



Taxi journey of 5 km (3 miles)

€2.80



E-scooter (15 min. ride)

€2.50



E-car (per day)

€25.50



Parking in city center (per hour)

€1.00



Gym membership (monthly fee)

€22.00



Cinema ticket

€6.10



Private kindergarten (per month)

€241.00



1-bedroom apartment in city center (rent per month)

€268.00



Average basic utilities

€97



Prepaid mobile tariff (1 min.)

€0.14



Internet (1 Gbps connection)

€11.40

Cost of living in
selected European
cities vs. Plovdiv

+13%

BUCHAREST

+55%

PRAGUE

+48%

BRATISLAVA

+114%

BERLIN

Culture & tourism

12 best things to do in Plovdiv



Visit the Old Town,
part of the UNESCO
World Heritage Tentative
List



Watch the sunset
over the city at the
archeological complex
Nebet Tepe



Attend an event
at one of the world's
best-preserved ancient
theatres



Get to know Plovdiv's
rich Roman heritage,
including well-preserved
stadium built in
the II century



Visit the Bishop's
Basilica
one of the largest late
antique Early-Christian
churches on the Balkans



Feel the Plovdiv
vibe
in the creative-industry
district Kapana
(the Trap)



Relax at the singing
fountains
situated in Tsar
Simeon's Garden



Stroll down
the Main Street
the longest pedestrian
street in Europe



Visit a sports
championship
at the multi-sport
complex at regatta venue



Join the Free Walking
Tour
a sightseeing tour
in English



Take a photo
at the Plovdiv Together
monument



Walk along Maritsa
river
in the heart of the city

Hundreds of
small and large
scale events

550+

CULTURAL EVENTS

700+

CULTURAL SIGHTS

50+

**MUSEUMS &
GALLERIES**

3

**OPEN AIR
THEATRES**

6

CINEMAS

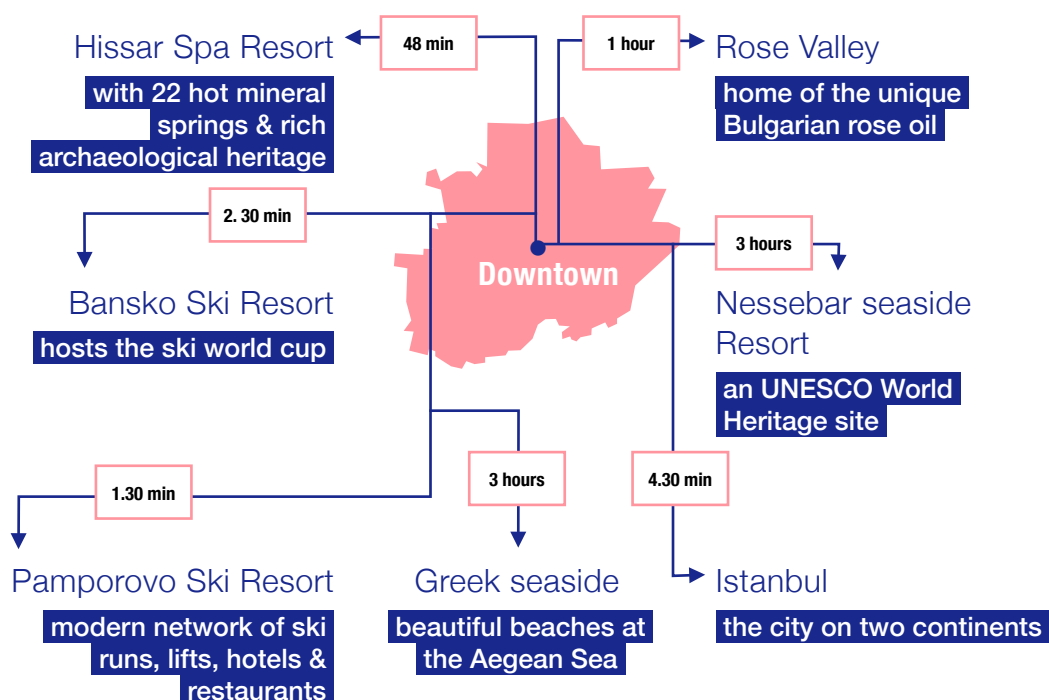
(with 25 screens)

17

4* & 5* HOTELS

Source: Plovdiv Municipality, Ministry of Tourism, TEZ

Places to visit around Plovdiv



CONCERTS

International Festival of Chamber Music	May-June
Balabanov's House Music Days	May-November
Music Daze	June
National Folk Festival	June
S'cool rock fest	June
Opera Open	June-September
Austrian Music Weeks	July
Hills of Rock	July
Wrong Fest Music Festival	September
Electric Orpheus	October
Plovdiv Jazz Fest	October
Plovdiv Guitar Fest	November

MOVIE & THEATER

Sofia Film Fest in Plovdiv	March
Cinemanía Film Fest	April
International Film Fest	May
Include in the Neighbourhood - Theater in the Park	June-July
Plovdiv Ballet Fest	June
"Black Box" Contemporary Dance Festival	June/July
Cinema Under the Stars	June/July
Panorama of Comedies "Curtain Under the Stars"	June-September
European Comedy Film Festival	July
Summer Cinema in the Park	July
Filippopolis Film Nights Festival	July/August
Theatre Comedy Festival "Smiles Under the Hill"	August-September
Theatre Festival "Scene at Crossroads"	September
Façade Video Festival	September
One Dance Week	October

STREET FESTS

Kapana Bazaar	April/May
Craft Fair	May/September
Made at the Academy Festival	June
Whiskey & Street Art Fest	June
European Nights of Museums	July
International Photo Salon	July/August
National Autumn Exhibitions	September

CRAFTS & EXHIBITIONS

Kapana Bazaar	April/May
Craft Fair	May/September
Made at the Academy Festival	June
Whiskey & Street Art Fest	June
European Nights of Museums	July
International Photo Salon	July/August
National Autumn Exhibitions	September
Week of Contemporary Art	September
Autumn Salon of Arts	September-November
Exhibition "Us and Them"	October
International Meetings of Photography	October

EDUCATION & TECHNOLOGY

Plovdiv Game Jam	January
Young Blue Earth Festival -	April
European Literature Night -	May
Hello Health Festival - May	May
International Poetry Festival "Orpheus"	May
National Career Days	May
Literary festival "Plovdiv Reads"	June
Anime & Gaming Festival	July

SPORTS

Grappling Tournament	April
European Mile Plovdiv	May
ITF Taekwon-do Championship	June
International Cycling Tour of Bulgaria	July
Plovdiv Triathlon	July
European Women's Volleyball Championship	August
World Youth Rowing Competitions	August
Marathon Plovdiv	October

CUISINE & LIFESTYLE

Wine & Gourmet Festival	May
Plovdiv Food Park Festival	June
Ethno Kitchen on Wheels	June/July
Street Food & Music Festival	July
Plovdiv Beer Fest	September
Parade of the Young Wine	November



BISHOP'S BASILICA OF PHILIPPOLIS

www.plovdivmosaics.org



The Bishop's Basilica of Philippopolis is the newest tourist site of Plovdiv. It was opened for visitors on April 18th, 2021. ***The Bishop's Basilica and Late-Antique Mosaics of Philippopolis, Roman Province of Thrace*** is included in UNESCO's Tentative List of Republic of Bulgaria.

CREATING A BUSINESS-FRIENDLY CITY



PLOVDIV MUNICIPALITY

Bulgaria, 4000 Plovdiv, 1 Stefan Stambolov Sq.

tel.: +359 32 656 727

web page: invest.plovdiv.bg

e-mail: invest@plovdiv.bg