

INSPIRAL



**OPERATING LIGHTS
OPERATING TABLES**

INSPIRAL

www.inspital.com

CONTENT

03	OPERATING LIGHTS
16	PENDANT SYSTEMS
18	OPERATING TABLES
28	C-ARM IMAGING TABLE
30	SURGICAL POSITIONS
32	OPERATING TABLE ACCESSORIES



New generation, LED Technology

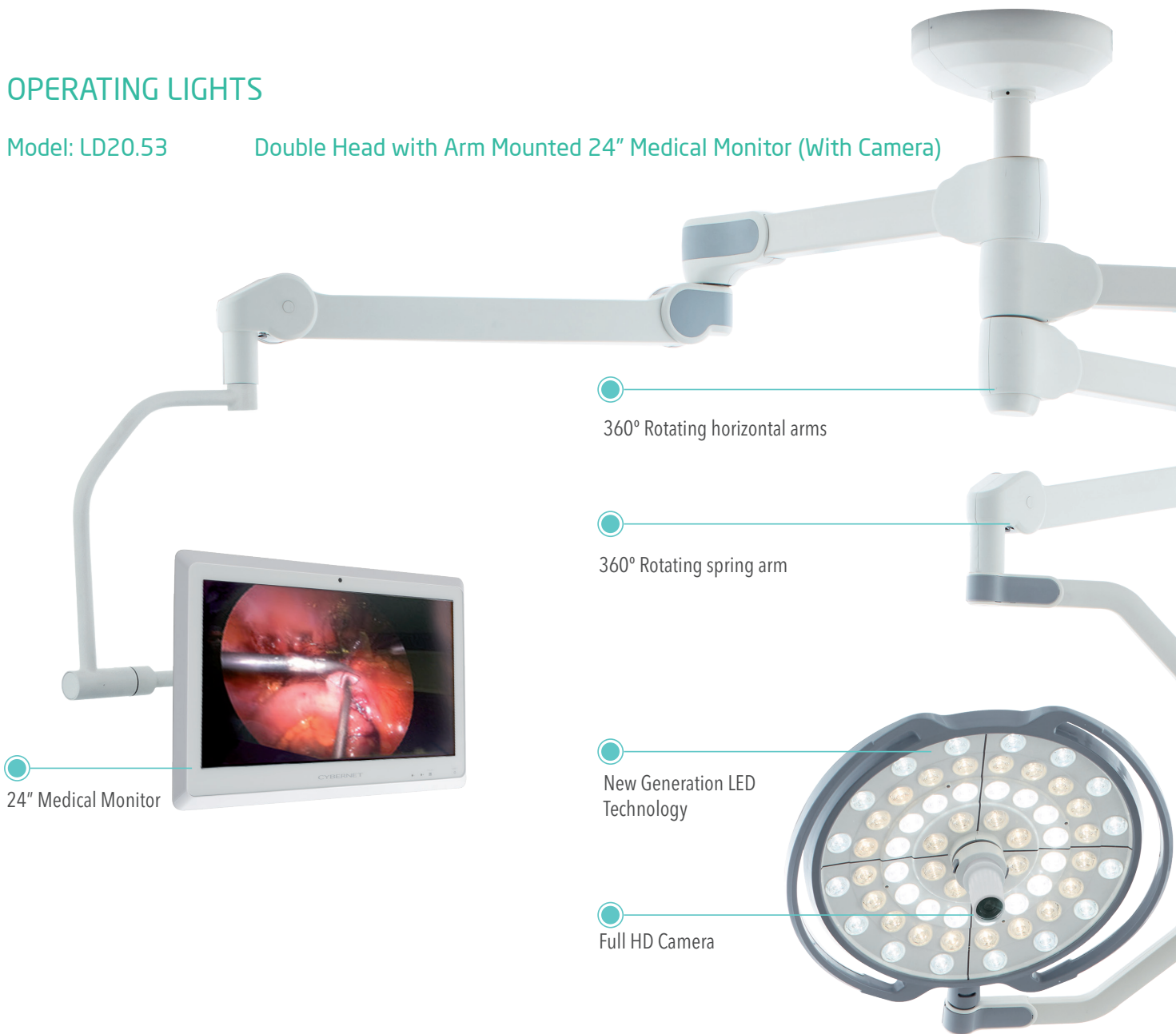




OPERATING LIGHTS

Model: LD20.53

Double Head with Arm Mounted 24" Medical Monitor (With Camera)



24" Medical Monitor

360° Rotating horizontal arms

360° Rotating spring arm

New Generation LED Technology

Full HD Camera



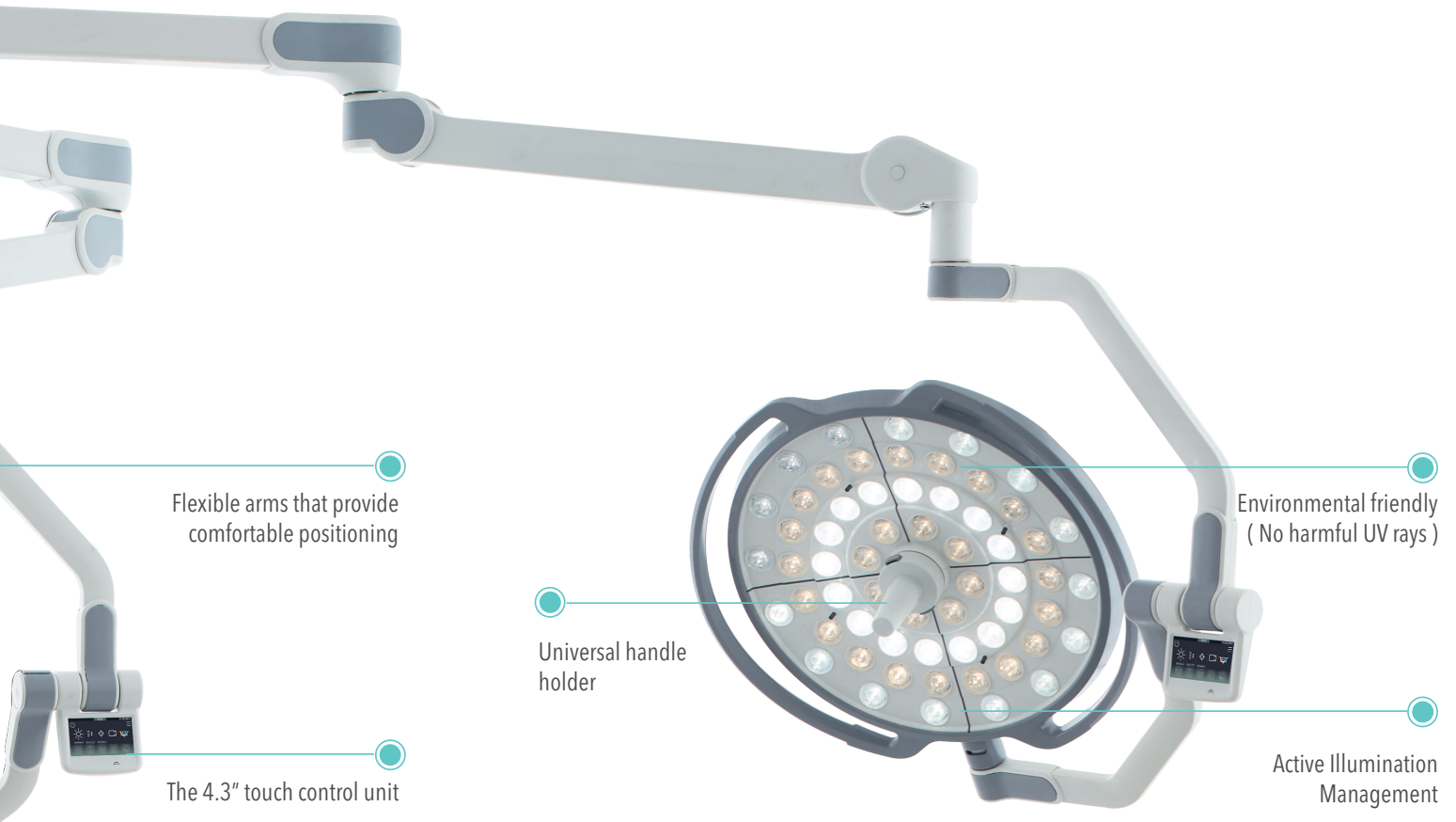
Full HD Surgical Camera

- ◆ Surgical videos taken by Full HD cameras provide clear images taken from the operator's point of view, allowing vital intraoperative findings to be clearly illustrated and comprehensively explained



New Generation LED Technology

- ◆ Warm /cold white LEDs combined with unique high-tech lenses provide brilliant, homogenous light. Each LED module can be replaced individually in case of any failure



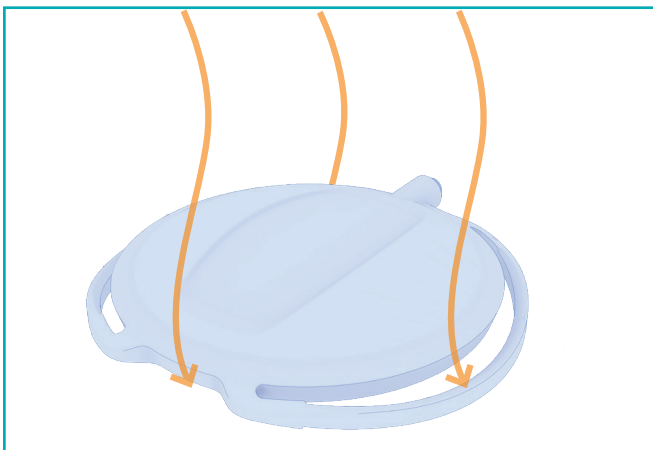
Flexible arms that provide comfortable positioning

The 4.3" touch control unit

Universal handle holder

Environmental friendly (No harmful UV rays)

Active Illumination Management

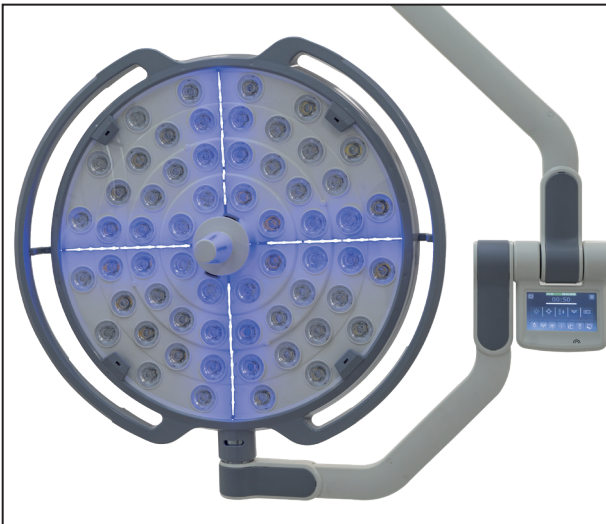


Special Lamp Head Design

- ◆ The special slim elliptic head design allows unobstructed flow of clean air through the light head to dissipate accumulated heat and surgical smoke. Degree of turbulence is lower than 29 % at surgical field.

Adjustable Light Field Diameter

- ◆ Innovative beam design offers you an extremely wide range of adjustable light field size from 130 mm to 360 mm. The light patch can be easily matched to the wound size.



Endo Light Mode / StandBy Mode

- ◆ Lamp can be switched to the endolight mode by a single button.
- ◆ Stylish blue LED strips in stand by mode



Boost Function

- ◆ In case of an unpredictable high illumination need, light intensity can be adjusted to 100% maximum level by a single touch



- ◆ 3000 K

- ◆ 5000 K

Wide Range of Adjustable Color Temperature

- ◆ The color temperature can be perfectly adjusted between 3000 K to 5000 K by 250 K steps according to the specific operations



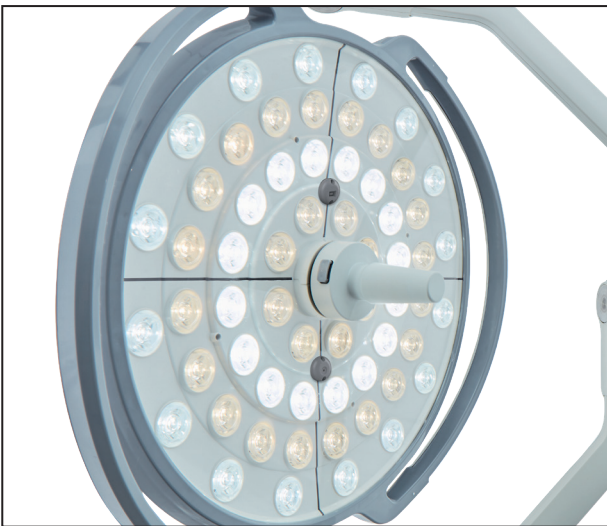
Touch Screen Pro Control Unit

- ◆ Inspital Unique tablet application allows to control all functions via wider Touch Screen Pro Control Unit. Optional tablet can be used as a wall control unit with its wall stand.



Medical Monitor

- ◆ Watch as you record with wide range of medical grade LED monitors from 19" to 55" sizes



Laser Positioning



- ◆ The laser guide is available to easily position the head at the right distance and place for efficient surgeries.

Automatic Distance Management (ADM)



- ◆ ADM system measures the distance between patient and light head automatically between 90-110cm and ensure that the surgical site always appears in the best light, literally.



Active Illumination Management (AIM)

- ◆ Inspital LED light technology provides the best illumination, even when surgeons are blocking the LEDs. The loss of illumination when certain LEDs are obstructed is automatically compensated by the AIM system.

Touch Screen Control Unit



Touch Screen Control Unit

- ◆ *Standard 4.3" LCD touch screen panel to control all functions intuitively and clearly by tapping and swiping the applicable icons.*



Model: LD20.24
Model: LD20.52

Double Head with 24" Wall Medical Monitor (With Camera)
Double Head with Camera (Without Monitor)



Model: LD10.03

Triple Head Operating Lights



High-Tech, maximum light

Illumination Stability Function

- ◆ *The ISF system prevents the intensity of the LED technology from falling, and maintains constant lighting levels by applying an automatic compensation. Guarantee optimum operating conditions in all circumstances.*



Model: LD10.02 Double Head Operating Lights



Model: LD10.01 Single Head Operating Lights



Model: LD05.06 Mobile with Battery
Battery back up system provides 2,5 hours of energy

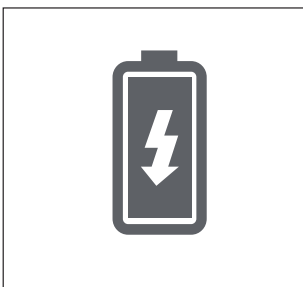
OPERATING LIGHTS

INSPITAL LED operating lights are designed to meet all surgical illumination requirements of operating theatres. New generation LED technology helps the surgeons to operate and view the surgery area clearly. INSPITAL LED lights can be adapted in any size of operating theatres including large hybrid types with variety of models & combinations.

TECHNICAL SPECIFICATIONS

• Max. Illumination power, in 1 m	: 160.000 Lux
• Diameter of lighthouse	: Ø670 mm
• Color temperature	: 3000 K - 5000 K
• Color rendering index, Ra CRI	: 96%
• Dimming Range	: % 1 - 100
• Light Field Diameter d10	: 24 - 36 cm / 9.5" - 14.2"
• Light Field Diameter d50	: 13 - 28 cm / 5.1" - 11"
• Number of LED modules	: 60
• Lifetime of LED	: >60.000 h
• Degree of turbulence (standard value 37.5% max.)	: 29%
• Depth of the volume of light L1 + L2 at 20%	: 130 cm / 51.2"
• Depth of the volume of light L1 + L2 at 60%	: 76 cm / 30"
• Camera	: 1080p Full HD Camera
• Irradiance at nominal illuminance	: 200 W/m ²
• Additional options	: Touch Screen Pro Control Unit, Camera, Monitor, Battery Back Up

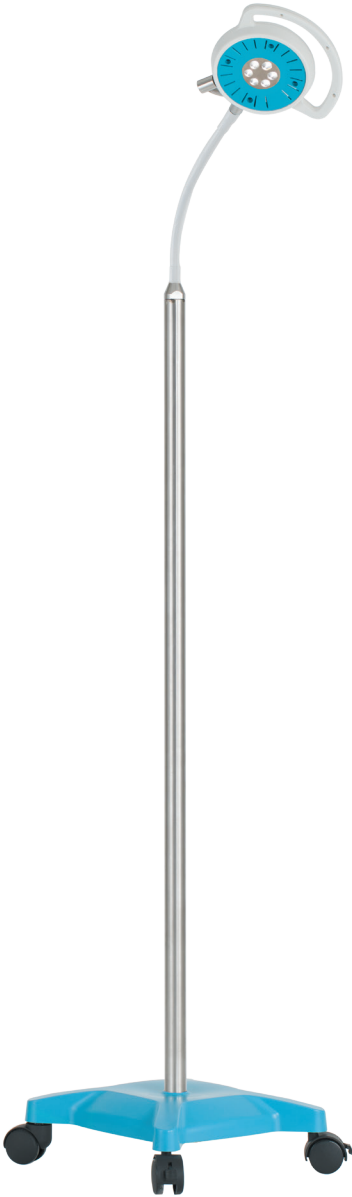
◆ All values are measured according to IEC 60601-2-41.



Battery

- ◆ External battery can be added for ceiling type operating lights
A.C. : LD05.05

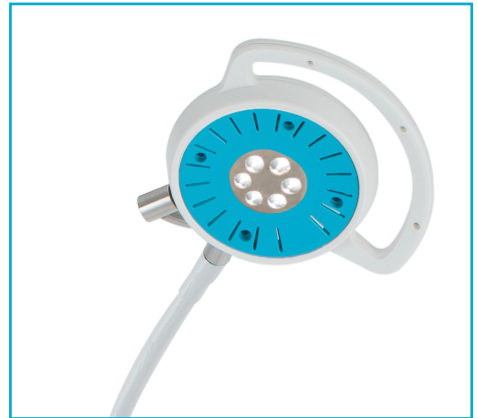
EXAMINATION LIGHTS



Model: LD02.08



Model: LD02.05



LED Technology

- ◆ Advanced LED technology to fulfill lighting requirements of any kind of minor surgeries and examinations
- ◆ Well-focused lighting with LED bulbs connected to specially developed reflector
- ◆ Maintenance free LED technology
- ◆ Easily accessible ON / OFF switching and 5-stage dimming control

Body Structure & Head Design

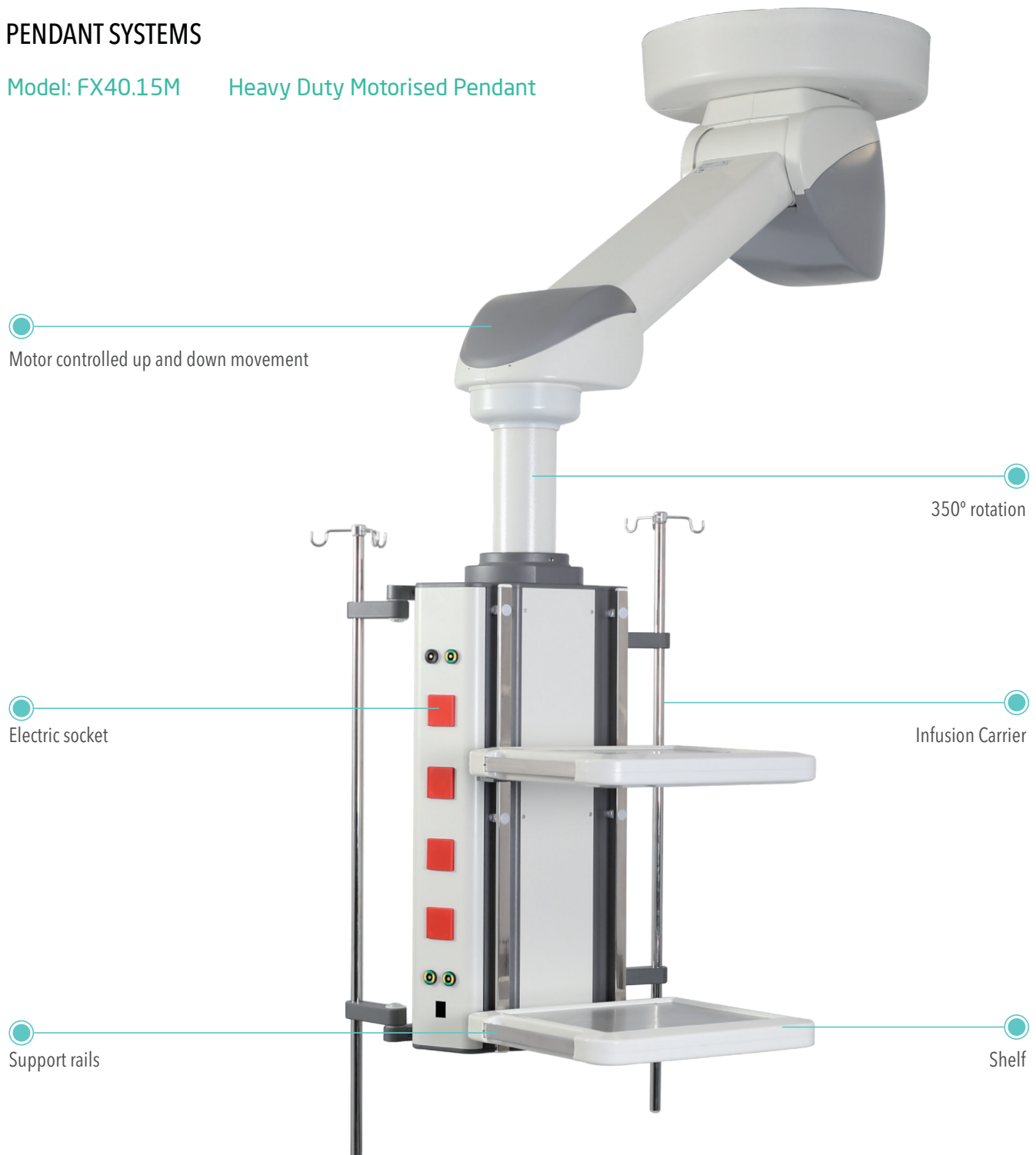
- ◆ Head can be positioned in required area and can be rotated 360° thanks to its spiral body structure
- ◆ Modern stylish and slim design

TECHNICAL SPECIFICATIONS

• Illumination	: 30.000 Lux / 0,4 m
• Light Head Diameter	: Ø150 mm
• LED Lifetime	: >50.000 h
• CRI	: 95%
• Number of LED Modules	: 6
• Color Temperature	: 4500 K
• Height	: LD02.08 / 1500 mm : LD02.05 / 1100 mm

PENDANT SYSTEMS

Model: FX40.15M Heavy Duty Motorised Pendant



Motor controlled up and down movement

350° rotation

Electric socket

Infusion Carrier

Support rails

Shelf

Inspital single joint pendants are designed to provide single point service for medical gas, electricity and equipment positioning nearby the patient. Mobility, flexibility and heavy duty design gives a strong support in operating theatres. Every pendant is custom design by our experienced sales support team.

Features

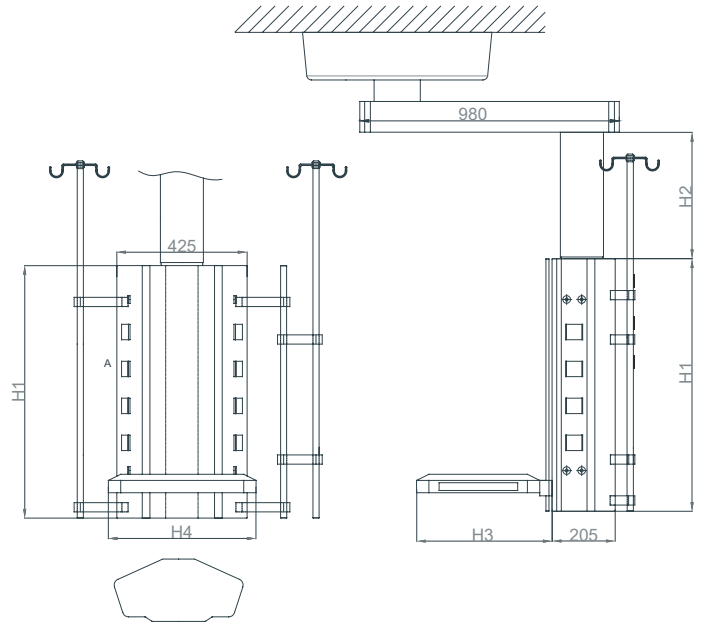
- High payload capacities until 1.000 kg
- Color coded brake buttons and joints
- Optional electromagnetic and pneumatic brake system
- Optional bluetooth sound system
- Visual indicators for movements

Standard Accessories

- Power Outlet: 8 Number UK, USA, Europe
- Grounding Note: 8 Pcs
- Rail Shelf: 1 Pc
- IV Pole 2 Pcs

Optional Accessories

- Shelves
- IV Pole
- Drawer
- Data socket (RJ45)
- Pressure gauge for Medical Gases
- Medical gas outlets (BS, DIN, NF)



H1 dimensions	H2 dimensions	H3, H4 dimensions
600 mm	300 mm	500x400
800 mm	500 mm	
1000 mm	700 mm	
1200 mm	900 mm	
	1100 mm	



Model: FX40.20D
Heavy Duty Double Joint Pendant



Model: FX40.10S
Heavy Duty Single Joint Pendant



Operating Together for Life

INSPIRAL



ELECTRO-HYDRAULIC OPERATING TABLE OT80.20

Three layers visco mattress
for ensuring patient comfort

Long and strong
rail line for accessories

Hand and column
control units

Column Control Panel

T-Base design for
maximum approach



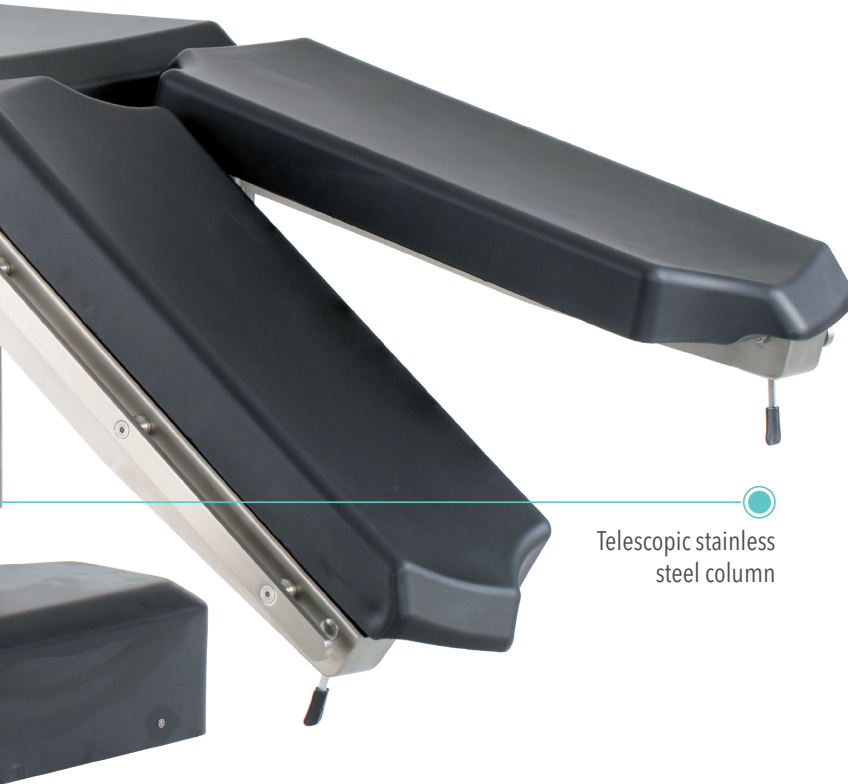
INSPI TAL operating tables are designed to meet all special requirements of operating theaters with its powerful and stable electro-hydraulic systems. Wide range of accessories makes them very flexible for different surgical disciplines.

Bariatric version of INSPI TAL tables with wider table top and higher lifting capacity (360 kgs) can meet specific requirements of this kind of operations.

Durable, long life
PU mattress

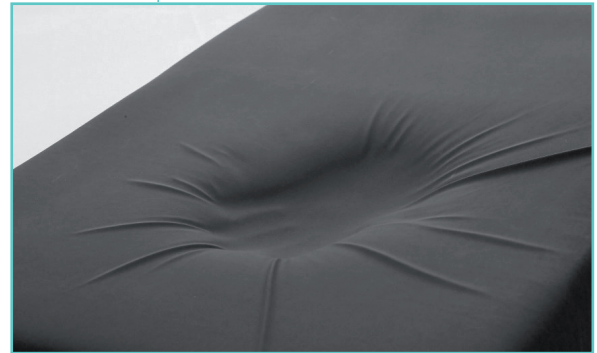
Optimum X-Ray image quality

Curved design PU mattress



Telescopic stainless
steel column

Visco mattress, optional



Stainless steel t-base, optional



Bariatric, optional



ELECTRO-HYDRAULIC OPERATING TABLE OT80.25



Antibacterial surface coating technology is easy to clean, highly resistant to corrosion and has the effect of preventing the production and settlement of blood and body fluids on the surface.



Optimal Clearance In Surgical Area

- ◆ Maximum surgical area visibility with its kidney elevator, integrated on the table and adjustable up to 150° (70 mm)



Sliding

- ◆ Image reception ability in a wide area without disturbing the sterile environment by its sliding feature within 300 mm on horizontal plane

DAY SURGERY TABLE OT80.10

INSPIRAL day surgery table is an all-in-one manual surgery table for transport, preoperative care, surgery and recovery. It is an ideal and cost effective solution for busy day surgery needs.



Functional Design

- ◆ Easy to handle modular design for different surgical disciplines



Accessory Positioning

- ◆ Stainless steel rail attachments integrated on both sides of the table, enabling accessory mounting without removing existing accessories



TECHNICAL FEATURES

• Model	: OT80.20	: OT80.25
• Sliding Movement	: 300 mm	: 300 mm
• Lateral Tilt Movement	: + 20° / - 20°	: + 20° / - 20°
• Back Rest Movement	: + 80° / - 45°	: + 80° / - 45°
• Trendelenburg	: + 30°	: + 30°
• Reverse Trendelenburg :	: - 30°	: - 30°
• Leg Rest Up / Down :	: + 30° / - 80°	: + 30° / - 80°
• Head Rest Movement	: + 30° / - 90°	: + 30° / - 90°
• Flex / Reflex Position	: + 225° / - 100°	: + 225° / - 100°
• Width x Length:	: 560x2200 mm	: 560x2200 mm
• Height (min)	: 595 mm	: 595 mm
• Height (max)	: 1035 mm	: 1035 mm
• Mattress Thickness	: 70 mm	: 70 mm
• Castors Diameter	: Ø 100 mm	: Ø 125 mm
• Max Patient Weight	: 360 kg / 800 lbs.	: 360 kg / 800 lbs.
• Kidney Surgery Position	: 150° (optional), OT80.20K	: 150° (optional), OT80.25K
• Stainless Steel T-base	: Optional, OT80.20S	: -
• Visco mattress	: Optional, OT80.20V	: Optional, OT80.25V

MOVEMENTS

• Height	: ✓	: ✓
• Back Rest	: ✓	: ✓
• Trendelenburg	: ✓	: ✓
• Reverse Trendelenburg	: ✓	: ✓
• Lateral Tilt	: ✓	: ✓
• Sliding	: ✓	: ✓
• Central Locking	: ✓	: ✓
• Head Rest	: ✓	: ✓
• Leg Rests, Up / Down	: ✓	: ✓

*Max. & Min. heights are measured without mattress

Electro-hydraulic ✓

Manual ✓



: OT80.15 / Bariatric	: OT80.10 / Mechanical
: 300 mm	: -
: + 20° / - 20°	: -
: + 80° / - 45°	: +45° / - 25°
: + 30°	: + 25°
: - 30°	: - 10°
: + 30° / - 80°	: + 30° / - 80°
: + 30° / - 90°	: + 30° / - 90°
: + 225° / - 100°	: -
: 720x2200 mm	: 560x2200 mm
: 595 mm	: 590 mm
: 1035 mm	: 850 mm
: 70 mm	: 70 mm
: Ø 100 mm	: Ø 125 mm
: 454 kg / 1000 lbs.	: 250 kg / 550 lbs.
: 150° (optional), OT80.15K	: -
: Optional, OT80.15S	: -
: Standard, OT80.15	: Optional, OT80.10V

: ✓	: <input checked="" type="checkbox"/>
: ✓	: <input checked="" type="checkbox"/>
: ✓	: <input checked="" type="checkbox"/>
: ✓	: <input checked="" type="checkbox"/>
: ✓	: -
: ✓	: -
: ✓	: <input checked="" type="checkbox"/>
: <input checked="" type="checkbox"/>	: <input checked="" type="checkbox"/>
: <input checked="" type="checkbox"/>	: <input checked="" type="checkbox"/>

*Max. & Min. heights are measured without mattress

Electro-hydraulic Manual



Different Mattress Options

- ◆ Compact material table top with high X-ray permeability that allows high-quality image reception
- ◆ Visco or polyurethane mattress options that ensure the patient's comfort by taking its body shape, thus preventing decubitus prophylaxis



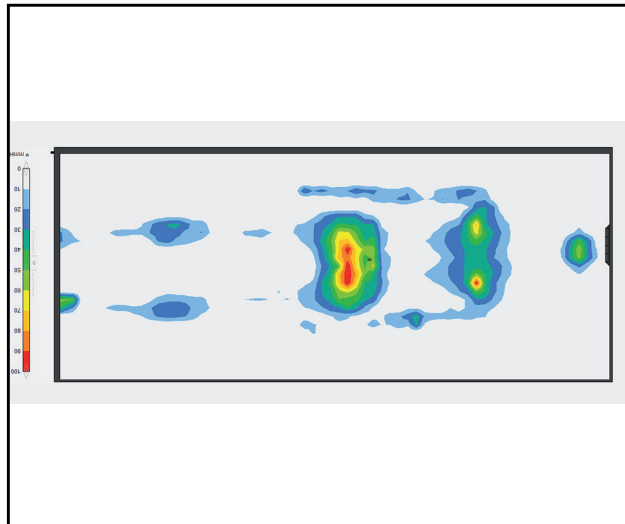
T-Base Specifications

- ◆ T-Base enables table optimal approach for the surgical team and equipment
- ◆ ABS Material with break and corrosion resistance



Easy Approach for C-Arm

- ◆ Complete access to all table areas and its X-ray permeable table top allow high image quality
- ◆ Suitable base structure for easy access and approach of the C-arm scopy and surgical microscopes



Optimum Mattress Performance

- ◆ INSPITAL operating table mattresses are designed and manufactured according to the Pressure Mapping test results.



Control Feature

- ◆ Hand control mechanical brake system
- ◆ Full function hand control for 7 different movements



Column Control Panel

- ◆ Full function column control panel for emergency and secondary use
- ◆ Emergency stop button



Wide Range of Accessory Options

- ◆ Wide range of accessories enables variety of positions for general and special surgeries
- ◆ Trolley options to carry and store the accessories

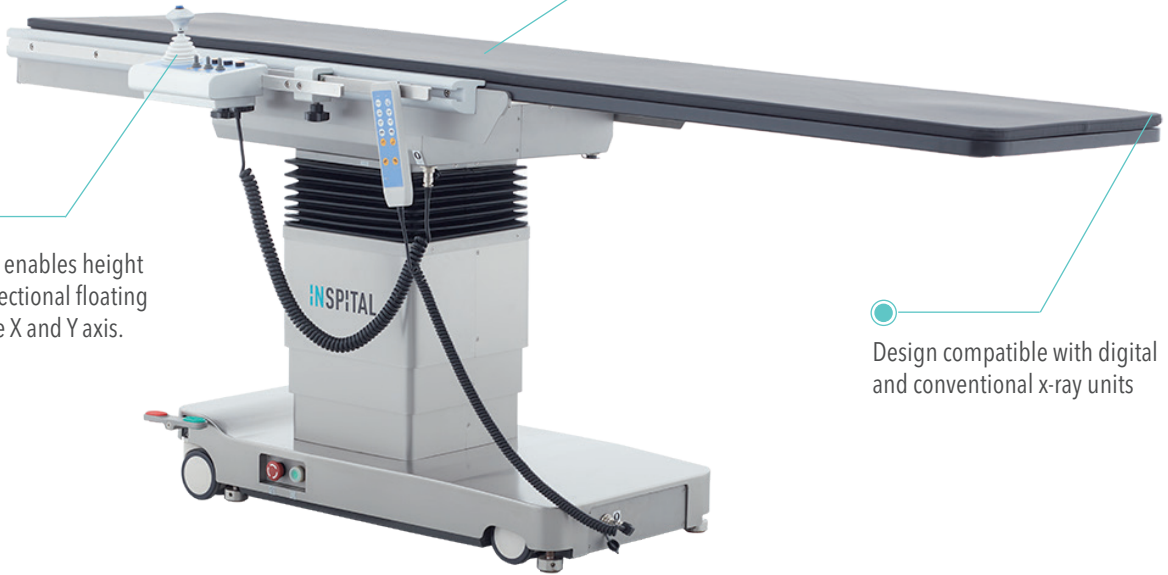
C-ARM IMAGING TABLE / OT80.30

INSPIRAL OT80.30 imaging tables are designed to enable excellent X-ray accessibility with its carbon fiber top tray. It offers maximum imaging quality at low radiation and solutions for surgery and interventional radiology.

Carbon fiber floating tabletop within the imaging area and with high X-ray permeability at $\leq 0,43$ mmAL

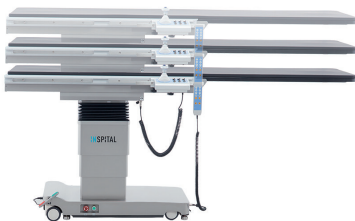
The hand control unit enables height adjustment and bidirectional floating movements along the X and Y axis.

Design compatible with digital and conventional x-ray units



SPECIFICATIONS

• Table top:	: 2450*620 mm
• Length of imaging:	: 1860mm
• Longitudinal travel:	: 790 mm
• Lateral travel:	: 215 mm
• Vertical travel	: 360mm (750-1140)
• Trendelenburg& Reverse-	: 18°
• Lateral tilt	: 15°
• Load capacity	: 200 kg



Its 1100 mm carbon fiber tabletop enables various patient positions and low X-Ray absorption for clear imaging. This helps to extend the lifetime of the X-Ray machine Spheroid's tube.



The hand control unit enables height adjustment and bidirectional floating movements along the X and Y axis.





Left Lateral Tilt Position



Struma Surgery Position



Reflex Position



Flex Position



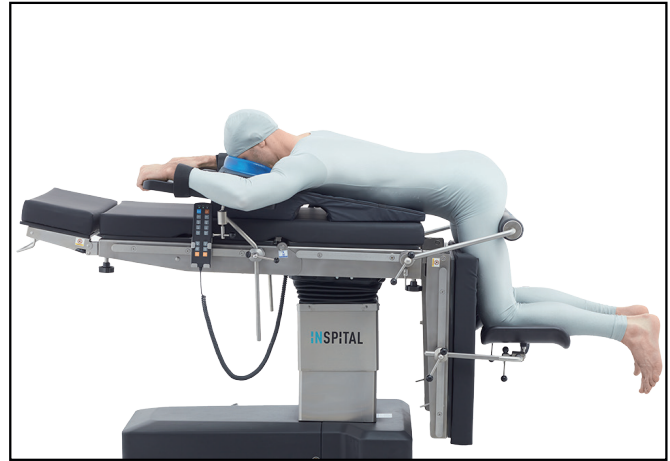
Chest (Breast) Surgery Position



Chest Surgery Position



Gynecologic and Urologic Surgery Position



Spinal, Proctologic Surgery Position



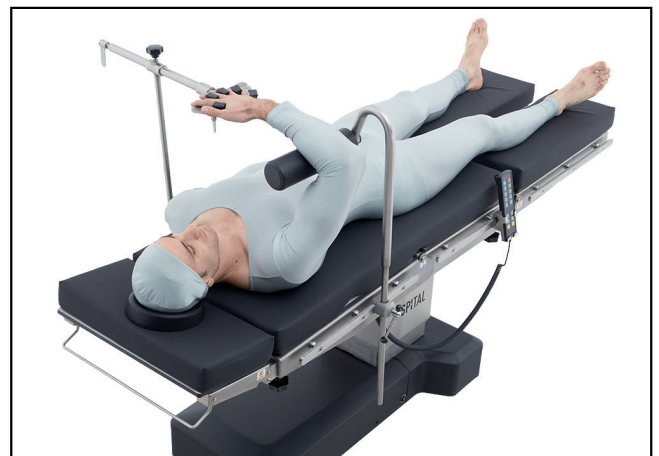
Meniscus Surgery Position



Ophthalmology Position



Arthroscopic Position



Orthopedic Fracture Surgery Position

Orthopedic Traction Set

Orthopedic traction set is suitable for use with all INSPITAL operating tables in orthopedic surgeries.

- ◆ Made of 304 quality stainless steel
- ◆ Leg strainer function by mechanical lever
- ◆ Traction boots with up & down movement and rotation capability around its own axis

A.C:OT60.90



Neurosurgery Head Rest with Pin & Horseshoe Head Rest

A.C: OT60.80 SET

Neurosurgery head rest especially designed for use in neurosurgery operations.

- ◆ Extremely durable and rigid construction from aluminum alloy
- ◆ 3 pcs fixing system with pins and completely adjustable skull clamps
- ◆ Adjustment mechanism from 4 different points
- ◆ Easily mountable horse shoe head rest accessory



Cross Bar Adapter A.C:OT60.82

- ◆ Can be used with skull fixing pins or horseshoe head rest accessories



Arthroscopy Shoulder Support

Designed for use in arthroscopy operations and suitable for use with all operating tables

- ◆ 7 stage back rest adjustment
- ◆ Head fixing section with up & down movement
- ◆ Special design offering easy reach to shoulder area
- ◆ Body fixing strap

A.C:OT60.76



Leg Positioning Boot

An accessory designed for use in branches that require leg positioning

- ◆ Positioning system with one hand control and self-brakes
- ◆ Special booths for foot comfort

A.C:OT60.77





Arm Support, Single

A.C.:OT60.01

- ◆ Including fixing clamp and strap
- ◆ Rotatable and tiltable armboard
- ◆ Adjustable height
- ◆ Made of stainless steel

Strap:

A.C.:OT60.02

- ◆ Adjustable length, easy to fix

Arm Adaptor

A.C.:OT60.34

- ◆ Arm extension apparatus



Anaesthesia Screen, Fixed Size

A.C.:OT60.03

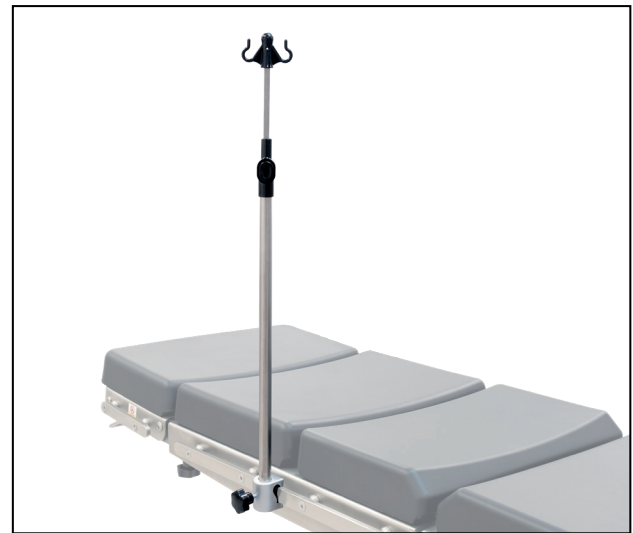
- ◆ Including fixing clamp
- ◆ Fixed width: Ø12x820x640 mm
- ◆ Made of stainless steel



Body Fixing Strap

A.C.: OT60.07

- ◆ Total length: 2300 mm
- ◆ Large cushion for body
- ◆ Easily adjustable length



IV Stand, 2 hooks

A.C.: OT60.05

- ◆ Including fixing clamp
- ◆ 2 hooks
- ◆ Adjustable height
- ◆ Made of stainless steel



IV Stand, 4 hooks

A.C.: OT60.06

- ◆ Including fixing clamp
- ◆ 4 hooks
- ◆ Adjustable height
- ◆ Made of stainless steel



Anaesthesia Screen, Adjustable

A.C.: OT60.04

- ◆ Including fixing clamp
- ◆ Extendible to both sides
- ◆ Adjustable height
- ◆ Made of stainless steel



Patient Heating System

A.C.: OT60.71

- ◆ Displays adjustable and measured temperature simultaneously
- ◆ Advanced alarm and security system
- ◆ Provides safe use with key lock
- ◆ Temperature sensitivity 0.1°
- ◆ Polyurethane fabric and carbonfiber heating layer



Geopel Leg Rest

A.C.: OT60.08

- ◆ Pair
- ◆ Including fixing clamps
- ◆ Rotatable and tiltable
- ◆ Adjustable height
- ◆ Made of stainless steel



Irrigation Bowl, Rectangle Form A.C.: OT60.11

- ◆ Including fixing clamp
- ◆ 2 joints rotatable arms
- ◆ Adjustable height
- ◆ Sizes: 325x265x95 mm
- ◆ Made of stainless steel



Irrigation Bowl With Drainage, Rectangle Form
A.C.: OT60.12

- ◆ Including fixing clamp
- ◆ Including drainage tube
- ◆ 2 joints rotatable arms
- ◆ Adjustable height
- ◆ Sizes: 325x265x95 mm
- ◆ Made of stainless steel



Waste Bin A.C.: OT60.14

- ◆ 20 L capacity
- ◆ Compatible with irrigation bowls with drainage
- ◆ Tube hole on the cover
- ◆ 5 castors and rubber bumper
- ◆ Including carriage handle and cover
- ◆ Made of stainless steel



Irrigation Bowl With Drainage, Round Form
A.C.: OT60.13

- ◆ Including fixing clamp
- ◆ Including drainage tube
- ◆ 2 joints rotatable arms
- ◆ Adjustable height
- ◆ Ø260x80 mm
- ◆ Made of stainless steel



Clamp, Rotatable & Adjustable Jaw

A.C.:OT60.17

- ◆ For rod type accessories
- ◆ 360° rotatable
- ◆ Single lever for total lock
- ◆ Suitable for 25x10 mm rails
- ◆ Made of stainless steel



Clamp, Rotatable

A.C.:OT60.18

- ◆ For rod type accessories
- ◆ 360° rotatable
- ◆ Double locking lever
- ◆ Suitable for 25x10 mm rails
- ◆ Made of stainless steel



Clamp, Easy Fix

A.C.: OT60.15

- ◆ Easy to fix type. No need to slide from one side of the rail
- ◆ Suitable for 25x10 mm rails
- ◆ Made of aluminium



Clamp

A.C.: OT60.16

- ◆ For round rod type accessories
- ◆ Suitable for 25x10 mm rails
- ◆ Made of stainless steel



Shoulder Support

A.C.: OT60.09

- ◆ Pair
- ◆ Including fixing clamps
- ◆ Extendible
- ◆ Adjustable height
- ◆ Made of stainless steel



Lateral Support

A.C.: OT60.10

- ◆ Pair
- ◆ Including fixing clamps
- ◆ Extendible
- ◆ Rotatable and tiltable
- ◆ Adjustable height
- ◆ Made of stainless steel



Foot Support Plate

A.C.: OT60.19

- ◆ Pair
- ◆ Including fixing clamps
- ◆ Made of stainless steel



Proctology Set

A.C.: OT60.20

- ◆ Set of rectoscopy roll and knee supports
- ◆ Including fixing clamps
- ◆ Rotatable and tiltable knee support
- ◆ Height and angle adjustable rectoscopy roll
- ◆ Made of stainless steel



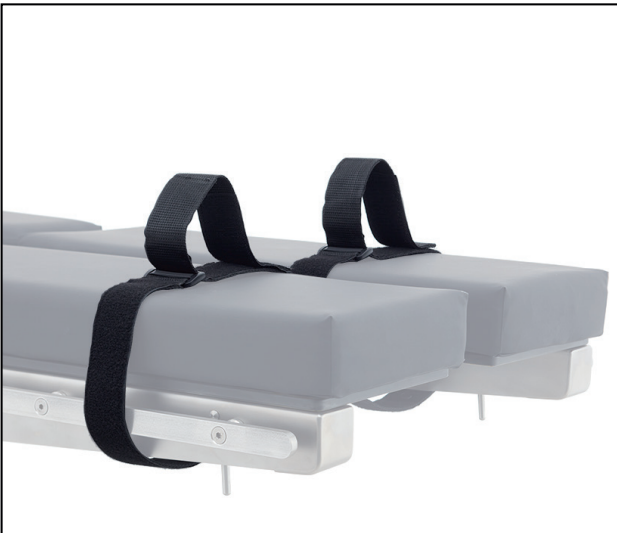
Ophthalmologic Head and Wrist Support A.C.: OT60.21

- ◆ Rotatable and tiltable head support and wrist support
- ◆ Height and angle adjustable
- ◆ Made of stainless steel



Weinberger Hand Traction Set A.C.: OT60.22

- ◆ For the secure fixation of hand and upper arm
- ◆ Height and distance adjustable hand cuff
- ◆ Height adjustable arm extension roll
- ◆ Including fixing clamps
- ◆ Made of stainless steel



Leg Strap

A.C.: OT60.23

- ◆ Pair
- ◆ Adjustable



Meniscus Positioning Roll

A.C.: OT60.24

- ◆ Including fixing clamp
- ◆ Adjustable height
- ◆ Made of stainless steel



Knee Arthroscopy Support

A.C.: OT60.72

- ◆ Including fixing clamp
- ◆ Adjustable height
- ◆ Made of stainless steel



Carbonfiber Extension Board

A.C.: OT60.73

- ◆ Fixing from the leg section
- ◆ Carbonfiber material



Sliding Handles

A.C.:OT60.25

- ◆ Designed for easy movement
- ◆ Pair
- ◆ Including fixing clamps
- ◆ Made of stainless steel



Arm Surgery Extension

A.C.: OT60.26

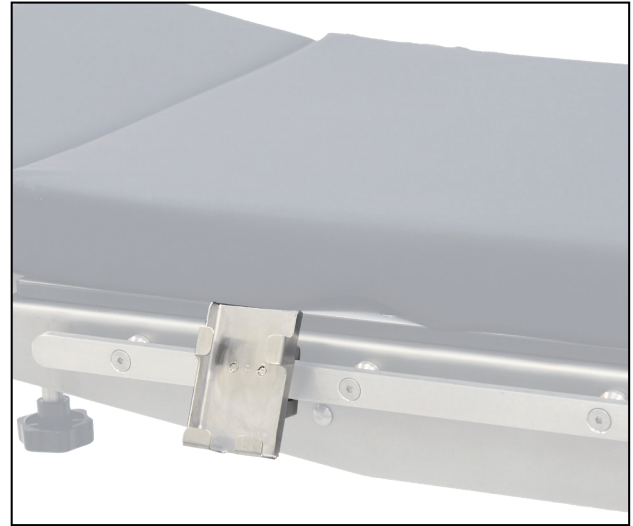
- ◆ Including fixing clamps
- ◆ Height adjustable
- ◆ 2 support leg with brake castors
- ◆ Made of stainless steel



Hand Control Unit

A.C.: OT60.27

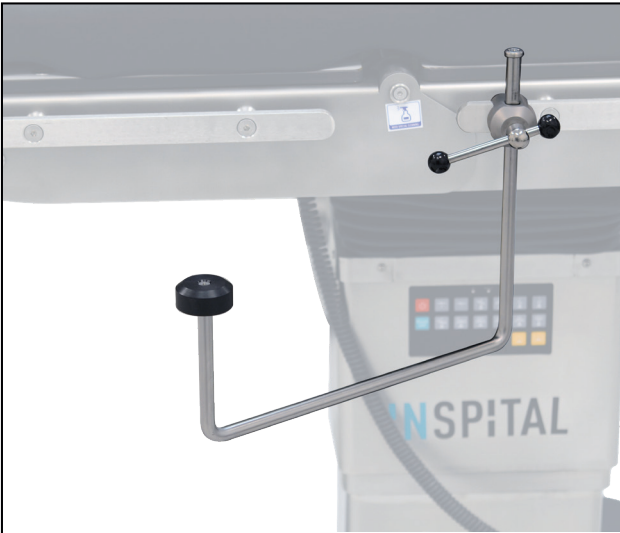
- ◆ Full function hand control unit



Support for Hand Control Unit

A.C.: OT60.29

- ◆ Easy to fix to accessory rail
- ◆ Made of stainless steel



X-Ray Cassette Support

A.C.: OT60.30

- ◆ Used to fix and support X-Ray cassettes
- ◆ Including fixing clamp
- ◆ Made of stainless steel



X-Ray Cassette Tray

A.C.: OT60.31

- ◆ Used to carry and position the X-Ray cassettes
- ◆ Including fixing clamp
- ◆ Made of stainless steel



Orthopedic Traction Set Trolley A.C.: OT60.33

- ◆ For the storage and easy installation of orthopedic traction set
- ◆ Large basket for smaller accessories
- ◆ Four castors, two with brake
- ◆ Made of stainless steel



Accessory Trolley A.C.: OT60.32

- ◆ For the storage of table accessories
- ◆ Four rails to hang all accessories
- ◆ Four castors, two with brake
- ◆ Made of stainless steel



Step, Double

A.C.: BS10.20

- ◆ Sizes: 640x600x400 mm
- ◆ Made of stainless steel



Step, Single

A.C.: BS10.10

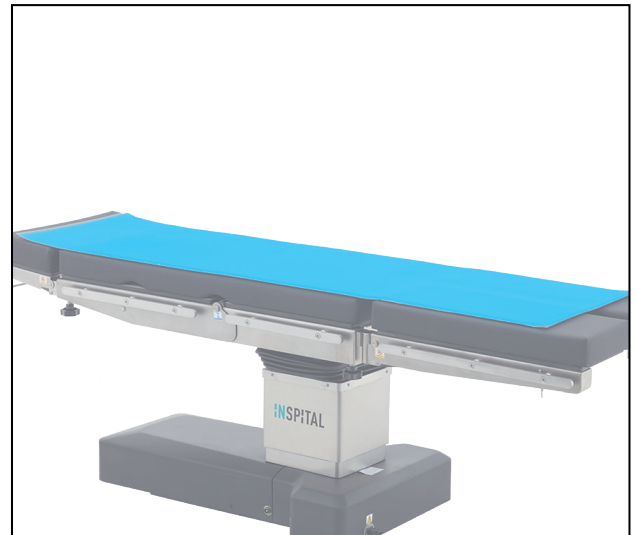
- ◆ Sizes: 600x350x180 mm
- ◆ Made of stainless steel



Wilson Frame Set

A.C.: OT60.61

- ◆ Consist of 1 piece of large cushion and 4 pieces of gel pads



Gel Mattress, Adult

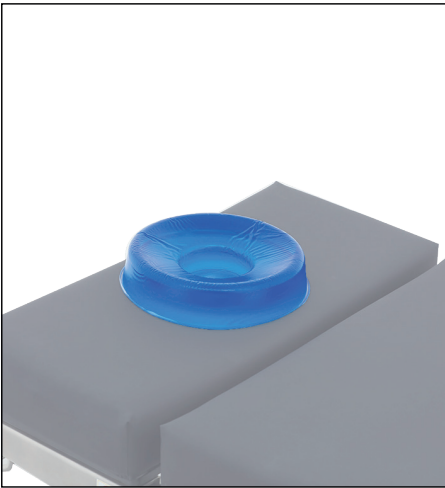
A.C.: OT60.62

- ◆ Sizes: 1830x500x100 mm
- ◆ Made of gel

Gel Mattress, Pediatric

A.C.: OT60.63

- ◆ Sizes: 660x310x130 mm
- ◆ Made of gel

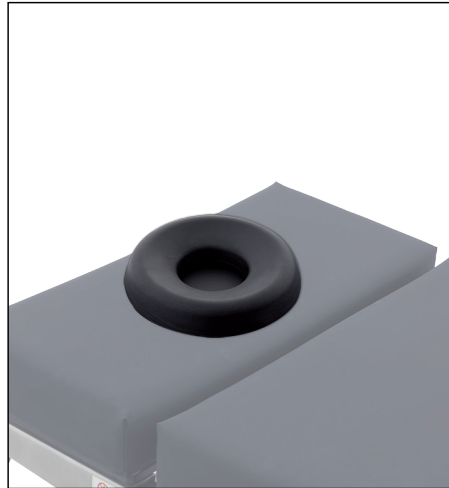


Head Rest, Gel, Adult A.C.: OT60.50

- ◆ Sizes: 200x75x45 mm
- ◆ Made of gel

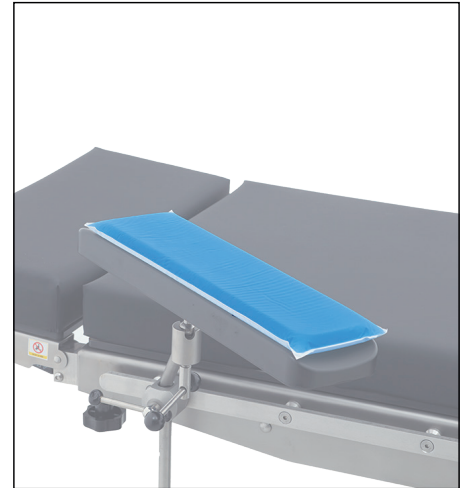
Head Rest, Gel, Pediatric A.C.: OT60.51

- ◆ Sizes: 140x60x35 mm
- ◆ Made of gel



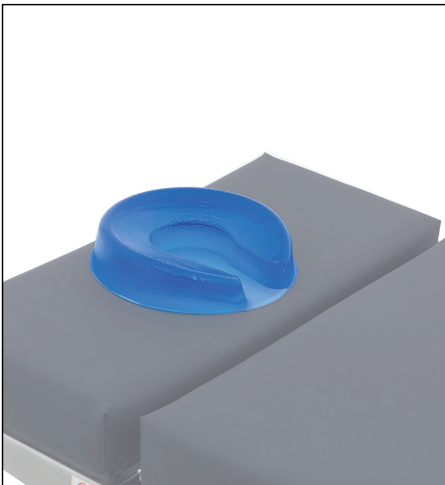
Head Rest, PU, Adult A.C.: OT60.40

- ◆ Sizes: 195x85x40 mm
- ◆ Made of PU



Arm Rest, Gel A.C.: OT60.54

- ◆ Sizes: 400x130x20 mm
- ◆ Made of gel

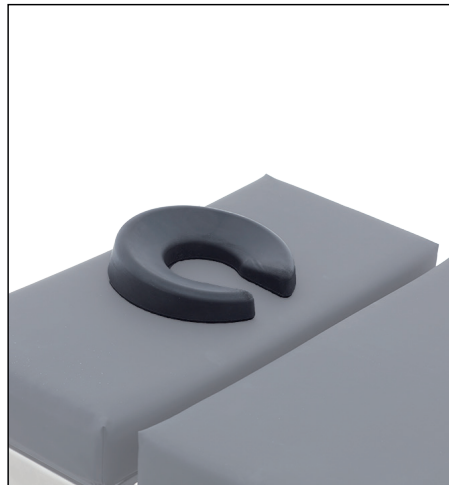


Horseshoe Head Rest, Gel, Adult A.C.: OT60.52

- ◆ Sizes: 200x75x45 mm
- ◆ Made of gel

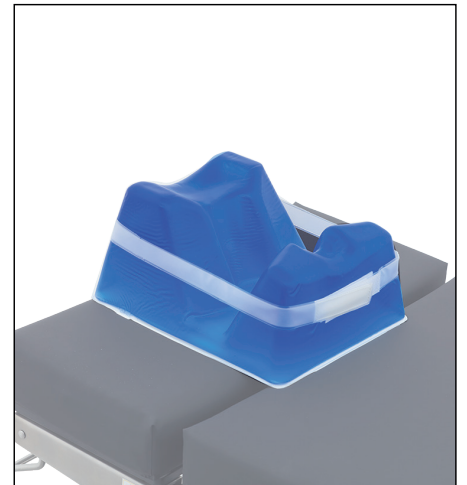
Horseshoe Head Rest, Gel, Pedi. A.C.: OT60.53

- ◆ Sizes: 140x60x35 mm
- ◆ Made of gel



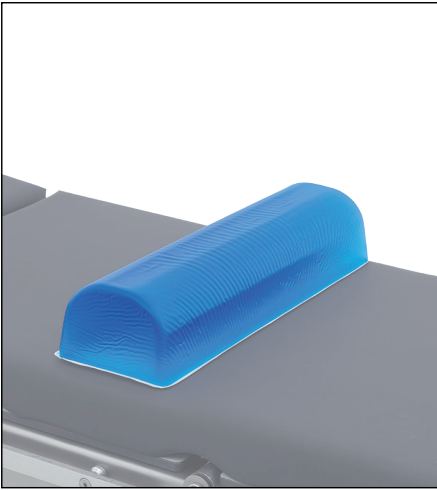
Horseshoe Head Rest, PU, Adult A.C.: OT60.41

- ◆ Sizes: 195x80x45 mm
- ◆ Made of PU



Prone Head Support, Gel A.C.: OT60.57

- ◆ Sizes: 280x230x145 mm
- ◆ Made of gel

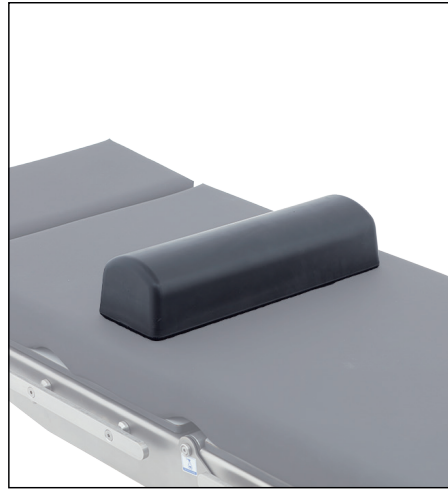


Chest Roll, Gel, Adult A.C.: OT60.55

- ◆ Sizes: 515 x170x100mm
- ◆ Made of gel

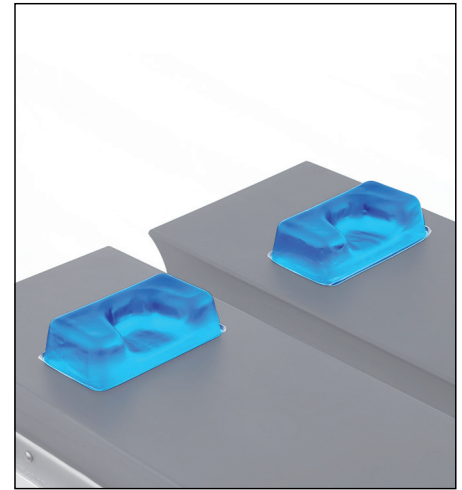
Chest Roll, Gel, Pediatric A.C.: OT60.56

- ◆ Sizes: 420x170x170mm
- ◆ Made of gel



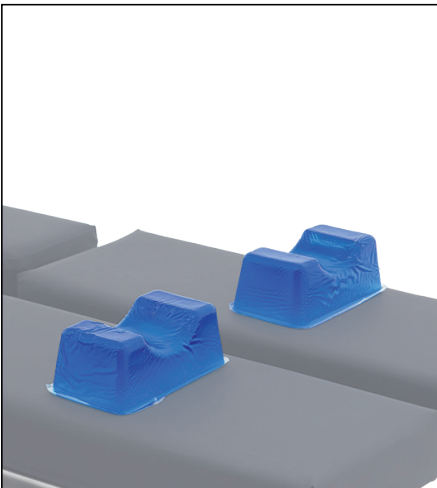
Chest Roll, PU A.C.: OT60.42

- ◆ Sizes: 440x135x100 mm
- ◆ Made of PU



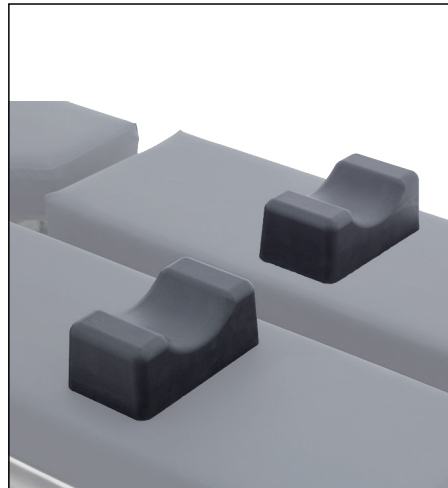
Heel Support, Gel A.C.: OT60.59

- ◆ Sizes: 170x110x50 mm
- ◆ Pair
- ◆ Made of gel



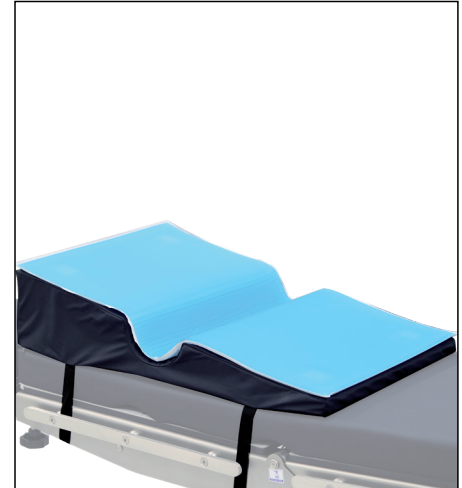
Foot Wrist Support, Gel A.C.: OT60.58

- ◆ Sizes: 100x110x70 mm
- ◆ Pair
- ◆ Made of gel



Foot Wrist Support, PU A.C.: OT60.43

- ◆ Sizes: 175x95x70 mm
- ◆ Pair
- ◆ Made of PU



Lateral Positioner, Gel A.C.: OT60.60

- ◆ Consist of 1 piece of large cushion and 1 piece of gel pad
- ◆ Sizes: 720x500x100 mm

Laparoscopic Surgery

- Anesthesia Screen, Fixed Size OT60.03
- Arm Support OT60.01
- Leg Positioning Boot OT60.77
- Head Rest, Gel, Adult OT60.50
- Gel Mattres, Adult OT60.62
- Shoulder Support OT60.09

Robotic Surgery

- Anesthesia Screen, Fixed Size OT60.03
- Arm Support OT60.01
- Leg Positioning Boot OT60.77
- Shoulder Support OT60.09
- Body Fixing Strap OT60.07

Urology

- Anesthesia Screen, Fixed Size OT60.03
- Arm Support OT60.01
- Irrigation Bowl with Drainage Rectangle F. OT60.12
- Leg Positioning Boot OT60.77

OB-GYN

- Anesthesia Screen, Fixed Size OT60.03
- Arm Support OT60.01
- Leg Positioning Boot OT60.77

Bariatric Surgery/Gastric Position

- Anesthesia Screen, Fixed Size OT60.03
- Arm Support OT60.01
- Foot Wrist Support Gel OT60.58
- Arm Surgery Extension OT60.26
- Arm Rest, Gel OT60.54
- Body Fixing Strap OT60.07

Traumatology/Shoulder Surgery

- Arm Support OT60.01
- Arthroscopy Shoulder Support OT60.76
- Lateral Support OT60.10

Traumatology/Hand Surgery

- Anesthesia Screen, Fixed Size OT60.03
- Arm Support OT60.01
- Arm Rest, Gel OT60.54

Orthopedic Surgery/Femur Fracture/Spine

- Anesthesia Screen, Fixed Size OT60.03
- Arm Support OT60.01
- Orthopedic Traction Set OT60.90
- Arm Surgery Extension OT60.26
- Gel Matress, Pediatric OT60.36

Spine /Kidney Bridge

- Anesthesia Screen, Fixed Size OT60.03
- Arm Support OT60.01
- Body Fixing Strap OT60.07

Orthopedic Surgery/Femur Fracture/Lateral

- Anesthesia Screen, Fixed Size OT60.03
- Arm Support OT60.01
- Orthopedic Traction Set OT60.90
- Arm Surgery Extension OT60.26

Orthopedic Surgery/Tibia Fracture

- Anesthesia Screen, Fixed Size OT60.03
- Arm Support OT60.01
- Orthopedic Traction Set OT60.90
- Arm Surgery Extension OT60.26

Spine Surgery in Prone Position

- Anesthesia Screen, Fixed Size OT60.03
- Arm Adaptor OT60.34
- Prone Head Support, Gel OT60.57
- Arm Support OT60.01

Pediatric Set Ups

- Anesthesia Screen, Fixed Size OT60.03
- Gel Matress, Pediatric

Cardiovascular Surgery

- Anesthesia Screen, Fixed Size OT60.03
- Arm Support OT60.01
- Arm Rest Gel OT60.54
- Clamp OT60.16

Lateral/Kidney Surgery

- Anesthesia Screen, Fixed Size OT60.03
- Arm Support OT60.01
- Lateral Support OT60.10

Neurosurgery/Half Sitting Position

- Anesthesia Screen, Fixed Size OT60.03
- Arm Support OT60.01
- Lateral Support OT60.10
- Neurosurgery Head Rest with Pin& Hor. OT60.80
- Head Rest
- Body Fixing Strap OT60.07

Neurosurgery/Parkbench Position

- Anesthesia Screen, Fixed Size OT60.03
- Arm Support OT60.01
- Lateral Support OT60.10
- Neurosurgery Head Rest with Pin& Hor. OT60.80
- Head Rest

Neurosurgery/Prone

- Anesthesia Screen, Fixed Size OT60.03
- Arm Support OT60.01
- Lateral Support OT60.10
- Neurosurgery Head Rest with Pin& Hor. OT60.80
- Head Rest
- Body Fixing Strap OT60.07

INSPIITAL



Made in Germany

**INSPIITAL MEDICAL
TECHNOLOGY GmbH**

Kalkumer Str.125

40468 Düsseldorf, GERMANY

Tel: +49 211 680 20 53-54

Fax: +49 211 680 20 55

www.inspital.com

info@inspital.com

KT-01-IN-OP / 06.20/01

All information in this document is subject change without prior notice. No parts of this document may be reproduced or transmitted in any form by any means without the express written permission of the manufacturer. All brand name and product names in this document are trademarks or registered trademarks or of INSPIITAL.