

TREMOLINE

FT36 Performante

User Manual

FT36 Performante

(Flat Top – Fine Tuning – Floating Tremolo - 6 String)

Forward:

FT36 Performante is designed, engineered and made to provide better performance by higher level of convenience and sound quality.

FT36 Performante - *inspired by* Italian car design,

influenced by German engineering,

produced by Swiss watch precision

and looks seductive like a French piece of art.

We declare that:

All metal parts of the ***FT36 Performante*** are produced only from solid bars, sheets and wires of specially selected stainless steel alloys through variety of machining processes.

All plastic parts of the ***FT36 Performante*** are made of specially selected engineering plastics, which withstand to heavy loads, are acid-resistant, dimensionally stable, long lasting and provide low friction.

All parts of the ***FT36 Performante*** are non-magnetic, which leads to the lack of magnetic interference (unwanted noise).

All parts of the ***FT36 Performante*** comply with RoHS 2 (European Directive 2011/65/EU) for the Restriction of use of certain Hazardous Substances).

All parts of ***FT36 Performante*** are non-allergenic and comply with ISO 10993-10 (European standard for biocompatibility).

All used coatings for the ***FT36 Performante*** are made with the latest generation coating technology and, in addition to the brilliant decorative appearance, are essential to increase durability, hardness, chemical, wear and abrasive resistance.

CONTENTS

- I. Instruction for UNPACKING - 3
 - I-1. UNPACKING - 3

- II. Instruction for UNINSTALLING, PREPARING, INSTALLATION,
ADJUSTMENTS AND MAINTENANCES - 5
 - II-1. UNINSTALLING - 5
 - II-2. PREPARING - 6
 - II-3. INSTALLATION - 7
 - II-4. ADJUSTMENTS - 12
 - II-4.01. Height Adjustment - 12
 - II-4.02. Intonation Adjustment - 12
 - II-4.03. Tremolo Spring Adjustment - 13
 - II-4.04. Fine Tuning Adjustment - 14
 - II-4.05. Tremolo Arm Adjustment - 14
 - II-5. MAINTENANCES - 14
 - II-5.01. Daily (after session) Maintenance - 15
 - II-5.02. Annual (or seasonal) Maintenance - 15

- III. Instruction for UNINSTALLING, PREPARING, INSTALLATION,
ADJUSTMENTS AND MAINTENANCES - 17

I. Instruction for UNPACKING

IMPORTANT NOTICE! Please read the following instructions before proceeding with the installation of the **FT36 Performante**, or if you prefer take a look at the materials on our web site www.tremoline.com in the section **Technical Support**. These actions can save you a lot of headaches, time or even destruction of parts of the device, due to improper manipulations.

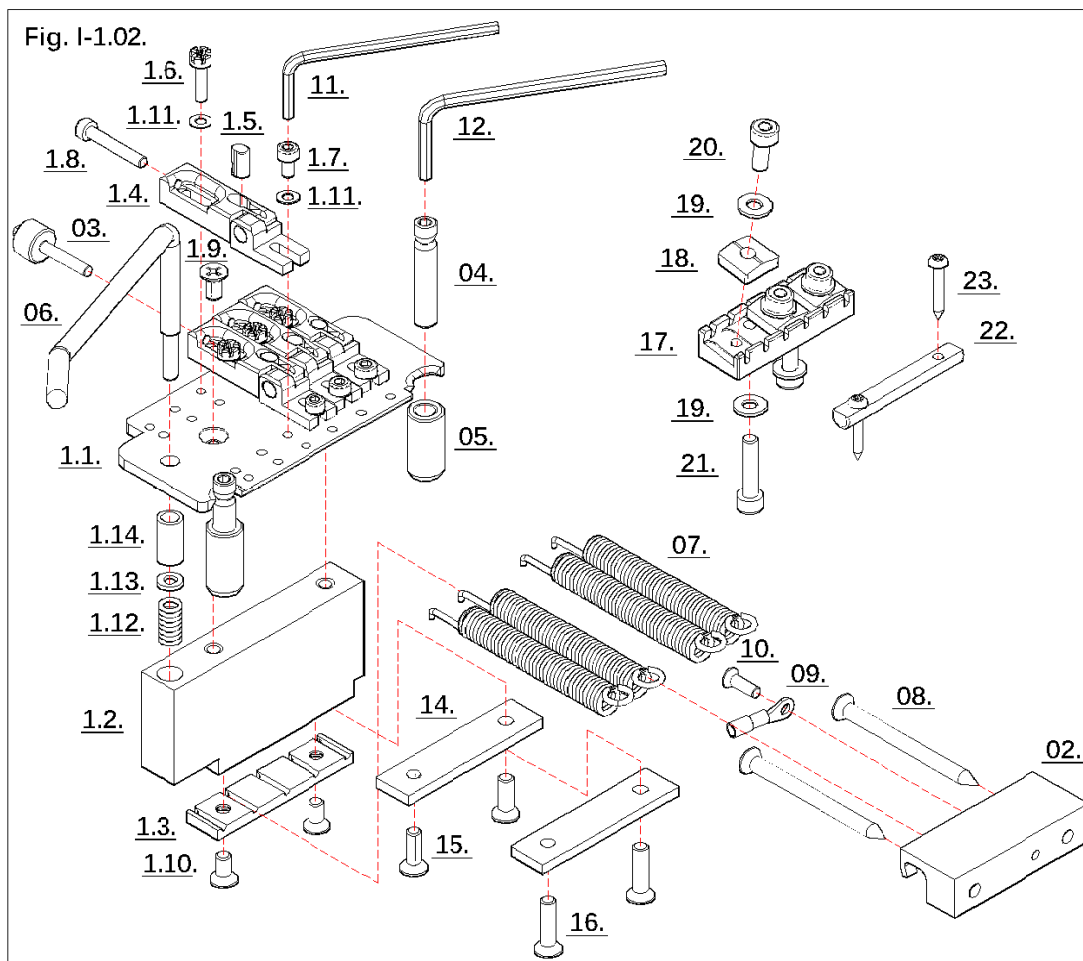
I-1. UNPACKING

WARNING! Be careful and follow the procedures, as well as their sequence. Improper use of tools and parts and / or procedures can cause serious injuries!

IMPORTANT NOTICE! Keep and save the box after unpacking! This will help you prepare the **FT36 Performante** for installation, as well as future annual and / or seasonal maintenance procedures on the device.

I-1.01. Once you have read this instruction, and have been able to open the cardboard box, drag, open, and preview the Packaging box containing all **FT36 Performante** components, and the key wrenches for its installation and setup.

I-1.02. Check wether the kit contains all parts and documents described below (see Fig. I-1.02.):



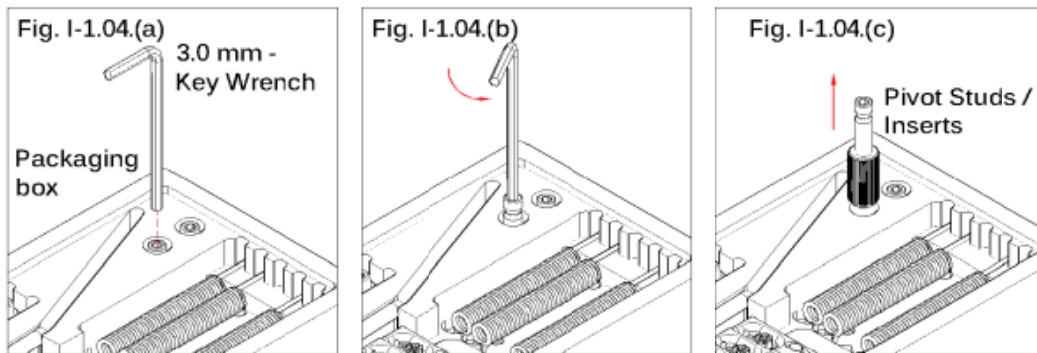
01. Tremolo set	- 1 pcs.	06. Tremolo Arm	- 1 pcs.
1.1. Baseplate	- 1 pcs.	07. Tremolo Spring	- 3 pcs.
1.2. Sustain Block	- 1 pcs.	08. Spring Claw Screw	- 2 pcs.
1.3. Retainer Bar	- 1 pcs.	09. Clamp Cable Lug	- 1 pcs.
1.4. Saddle Assembly	- 6 pcs.	10. Cable Lug Screw	- 1 pcs.
1.5. String Lock Insert	- 6 pcs.	11. Key wrench 2.5mm	- 1 pcs.
1.6. Fine Tuning Screw	- 6 pcs.	12. Key wrench 3.0mm	- 1 pcs.
1.7. Saddle Mounting Screw	- 6 pcs.	13. Retainer Plate	- 1 pcs.
1.8. String Lock Screw	- 6 pcs.	14. Second Retainer Plate(<i>optional</i>)	- 0 pcs.
1.9. Tremolo Mounting Screw	- 2 pcs.	15. 12mm Retainer Screw	- 2 pcs.
1.10. 8mm Retainer Screw	- 2 pcs.	16. 16mm Retainer Screw (<i>optional</i>)	- 0 pcs.
1.11. Shim Ring	- 12 pcs.	17. Locking Nut Base	- 1 pcs.
1.12. Tremolo Arm Spring	- 1 pcs.	18. Locking Nut Clamp	- 3 pcs.
1.13. Tremolo Arm Washer	- 1 pcs.	19. Locking Nut Washer	- 5 pcs.
1.14. Tremolo Arm Sleeve	- 1 pcs.	20. Clamp Screw	- 3 pcs.
02. Spring Claw	- 1 pcs.	21. Nut Mounting Screw	- 2 pcs.
03. Adjustment Screw	- 1 pcs.	22. Nut Bar	- 1 pcs.
04. Pivot Stud	- 2 pcs.	23. Nut Bar Screw	- 2 pcs.
05. Pivot Insert	- 2 pcs.	24. User Manual	- 1 pcs.

I-1.03. Make sure you have enough space (also enough illumination) to arrange the parts of the **FT36 Performante** as well as your instrument. This will help you make all the procedures faster and easier. It is recommended that all parts and tools are placed on soft, clean, light and not very thick cloth. This will protect them from possible unwanted scratches or even loss.

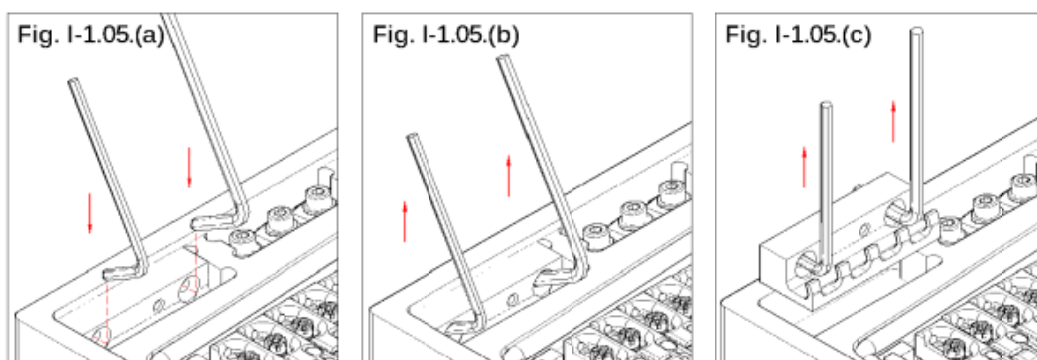
WARNING! Be very careful not to lose any parts! All parts are in the right quantity so that the FT36 Performante would be fully functional.

IMPORTANT NOTICE! The sequence of subtraction of the parts, as well as their initial layout for device preparing (see Section II-1) are very individual. All parts are carefully arranged in the box, so as not to be scratched or lost during the transportation. In this instruction for unpacking, attention will be paid only to those procedures, which are likely to scratch parts or to damage the integrity of the Packaging Box in the event of improper manipulations.

I-1.04. In order to easily remove the **Pivot Stud / Insert** pairs from the two holes in the box, insert the 3mm **Key Wrench** into the hexagonal hole of the Pivot Stud Head and unscrew the stud so that the entire screw head protrudes above the surface (just as much). Now with two fingers, grasp the head of the screw and remove the Pivot Stud / Insert pair from the hole. For the second pair, repeat the same procedure.



I-1.05. In order to easily remove the **Spring Claw**, use the **Key wrenches**. Insert them gently from the side of the short shoulder into the two holes in the Spring Claw body, until they stop at the bottom. Pull the part carefully upwards.



I-1.06. In order to easily remove the assembled **Tremolo set**, lift the box with one hand and push the set upwards, through the hole from the bottom of the box to lift about 2cm. Grab the Baseplate of the Tremolo, set on top, and remove it completely. You must do this procedure after you have removed the Spring Claw.

II. Instructions for UNINSTALLING, PREPARING, INSTALLATION, ADJUSTMENTS AND MAINTENANCES

(retrofit **Floyd Rose** (Original, Special, Pro, 1000 series), **Ibanez** (Edge, Lo-Pro Edge, Edge-Zero series), **Schaller** (Lockmeister 6, Schaller series), **Gotoh** (GE1996T series), **GraphTech** (LB63 series) and similar)

II-1. UNINSTALLING

IMPORTANT NOTICE! Probably you bought the **FT36 Performante** to replace the existing double locking tremolo on your guitar (OFR or one of its countless qualitative or poor copies). This is the reason why only the OFR replacement procedure is described in detail. The replacement of similar double locking devices is done in the same way. When replacing non-locking tremolo devices, only the procedures that differ from OFR replacement are described.

IMPORTANT NOTICE! We are convinced that all manufacturers of new musical instruments have the necessary knowledge and skills to properly install and set **FT36 Performante**, but one reading of this instruction will not hurt.

II-1.01. Before proceeding to replace the old OFR tremolo device, measure the exact distance between the first string and the 12 fret, as well as the distance between the first string and the 22nd or 24th fret (depending on the guitar model). Repeat the same procedure for the sixth string. Record the data clearly and legible on a sheet of paper and save it.

IMPORTANT NOTICE! The measuring procedure for the distance between strings and fretboard frets **MUST** be proceeded only when the strings are tuned.

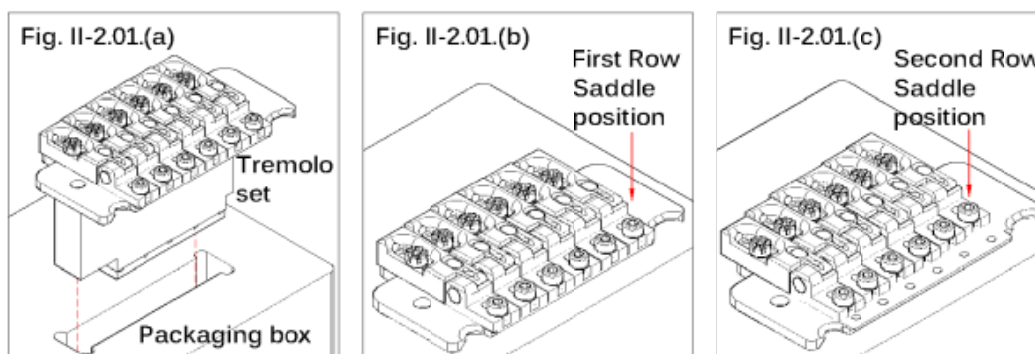
II-1.02. Remove the old OFR tremolo device by following its installation instructions in reverse order.

IMPORTANT NOTICE! Leave the old Pivot Studs without screwing or unscrewing. In this way, they will help you make the height adjustment much faster (see II.4-01), as described in the Adjustment section.

II-2. PREPARING

IMPORTANT NOTICE! All assembled parts (Tremolo set and Pivot Studs / Inserts) in the Packaging Box are set to be as compact as possible, when transporting and save you time and efforts. Before proceeding with the installation, all procedures for preparing the **FT36 Performante** must be completed.

II-2.01. Take the previously emptied **Packaging box** upside down onto a comfortable and free to work flat horizontal surface covered with soft, clean, light and a not too thick cloth. Insert the tremolo from the Sustain Block into the rectangular opening of the box, so the Fine Tuning Screws stop in the box.



IMPORTANT NOTICE! Before you proceed in replacing your old Double-Locking tremolo, it is **REQUIRED** during the preparation phase of the **FT36 Performante** to position all Saddle Assemblies on the **SECOND ROW** end position. This means that the front edge of the Saddle Mounting Screw Head has to be aligned with the front two sides of the String Saddle Assembly forks.

(6.35mm or ¼ " is the difference in the position of the Pivot Studs / Inserts, between locking and non-locking tremolos!)

II-2.02. Fully unscrew the **Fine Tuning Screw** to the first Saddle Assembly without removing it from the slot. Unscrew **Saddle Mounting Screw** just to loosen (a half of a turn). Slide the Saddle Assembly to the **SECOND ROW** position (so that the threaded holes of the second row are visible) and screw the Fine Tuning Screw into the second position, first to the end, then unscrew it half of a turn. Fully unscrew the Saddle Mounting Screw and after sliding the Saddle Assembly back around 6cm, screw the Saddle Mounting Screw in the **SECOND ROW** position without tightening it. Slide the Saddle Assembly to the rear end position (This means the front edge of the Saddle Mounting Screw Head is to be aligned with the front two sides of the String Saddle Assembly forks) and tighten the Saddle Mounting Screw well. Then repeat the procedure for the remaining Saddle Assemblies in the same sequence.

WARNING! Be very careful when handling the Fine Tuning and the Saddle Mounting Screws. There is a risk of losing the Shim Rings, standing right under the screw heads. Always check for the Shim Rings, when assembling the Fine Tuning and the Saddle Mounting Screws. They are very important for the proper functioning of the **FT36 Performante**.

II-2.03. Loosen the **String Lock Screws** no more than half of a turn, from the rear side of the Saddle Assembly.

WARNING! Do not unscrew the **String Lock Screws** more than 1.0 turn, due to the danger of losing one of the **String Lock Inserts**, when inverting the **FT36 Performante**.

II-2.04. Take the **FT36 Performante** out of the opening, in the Packaging box, turn it back and take it onto the bottom of the box. Then, unscrew the two **Retainer Bar Screws** 1,5 turns using a proper screwdriver, so that the Tremolo Spring hooks can be effortlessly pushed between the Retainer Bar and the Sustain Block.

II-2.05. Unscrew both **Pivot Studs** and separate them from the Pivot Inserts.

II-3. INSTALLATION

IMPORTANT NOTICE! This instruction describes mostly the retrofit procedures of an old OFR tremolo device with the **FT36 Performante**. This suggests that all previous adjustments are correct. This instruction does not describe the **Truss Rod Adjustment**, for example.

II-3.01. Unscrew one of the **old Pivot Studs** and, in its place, screw a new Pivot Stud into the old Pivot Insert, fixed in the guitar body (M6x1,0mm is the usual thread for the genuine FR Original, Pro, Special, Ibanez ... etc). Screw the Pivot Stud until the height of the head is equal to that of the other (old) Pivot Stud. Unscrew the second old Pivot Stud and in its place screw the second new Pivot Stud, while the head height is equal to the one of the first. This procedure is quite approximate, but it is good enough for the initial installation. For the exact positioning (screwing or unscrewing) of Pivot Studs, see section II-4.01 Height Adjustment.

WARNING! The **Pivot Studs** should be easily screwed in the existing **Pivot Inserts** from the old tremolo. Do not continue screwing the **Pivot Studs** in case of resistance. In this way, there is a danger of injuring and breaking the threads of the new **Pivot Studs** (although they are made of stainless steel). In this case, it is better to contact a professional who will remove the old **Pivot Inserts** from their nests and will install the new **Pivot Inserts** correctly. If the **Pivot Inserts** stay loosely in the nests, appropriate pads should be placed so that the new **Pivot Inserts** are squeezed into the nests with sufficient tightness.

II-3.02. Take the two **Spring Claw Screws** and insert them into the **Spring Claw** holes. Check whether the distance between the new screws and the distance between the old screw holes in the guitar body are the same. If they are the same, you can screw the **Spring Claw** screws into the holes roughly deep enough so that the position of the new **Spring Claw** coincides with that of the old one. (You can pre-mark the place of the old one with a sticky note). For the exact positioning, see section II-4.03 Tremolo Spring Adjustment.

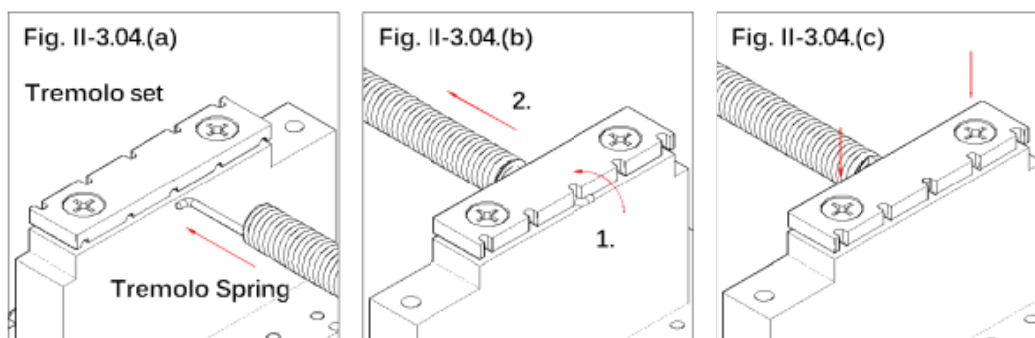
IMPORTANT NOTICE! Check that the distance between the bottom of the **Spring Claw** and the guitar body is about 3mm. For the proper operation of the **FT36 Performante**, it is very important that all parts are properly installed.

WARNING! If the distance between the new **Spring Claw Screws** and the distance between the holes for the old screws are different and / or the distance between the **Spring Claw** bottom and the guitar body is less than 2.0mm, contact a professional to perform the procedure on installation properly and qualitatively. Another option is to fill the holes with wooden pins and stick them. Then drill two new holes after taking the 3mm solid plate under the **Spring Claw** and center it aside the side walls of the spring cavity.

II-3.03. Take the **Crimp Cable Lug** and remove the plastic insulating sleeve. Carefully insert the sleeve inward into the ground cable, which protrudes from the guitar. Clean the ground cable end from insulation or old solder and secure it tight to the Cable Lug using of pliers. You can also solder it. Once the ground cable is tight secured and has a good electrical contact, return the plastic sleeve to the end of the ground cable so that it completely covers the joint. Attach the Cable Lug to the Spring Claw tight by screwing the **Cable Lug Screw**.

WARNING! Check the electrical circuit with a suitable electrical measuring tool. Make sure the grounding works correctly before proceeding with the next step.

II-3.04. Take the previously prepared **Tremolo set** (see steps II-2.01 to II-2.05) and place it very carefully into the tremolo cavity in the guitar body. Place the Baseplate knives on the Pivot Stud conical surfaces and turn the guitar back by holding the tremolo with one hand, so that it does not fall out. Even if it is a little shifted at this point, it is not fatal. Take a **Tremolo Spring** and insert its hook end into the space between the Retainer Bar and the Sustain Block in the special slots (middle position). Rotate the spring, so that the hook is placed at the bottom of the back slot of the Retainer Bar. Take the other spring end and place the ear at the bottom of the corresponding Spring Claw tooth. Make sure that the spring is stretched at least to the point that the Sustain Block rests on the opposite surface of the guitar body and screw both of the **Retainer Bar Screws**.

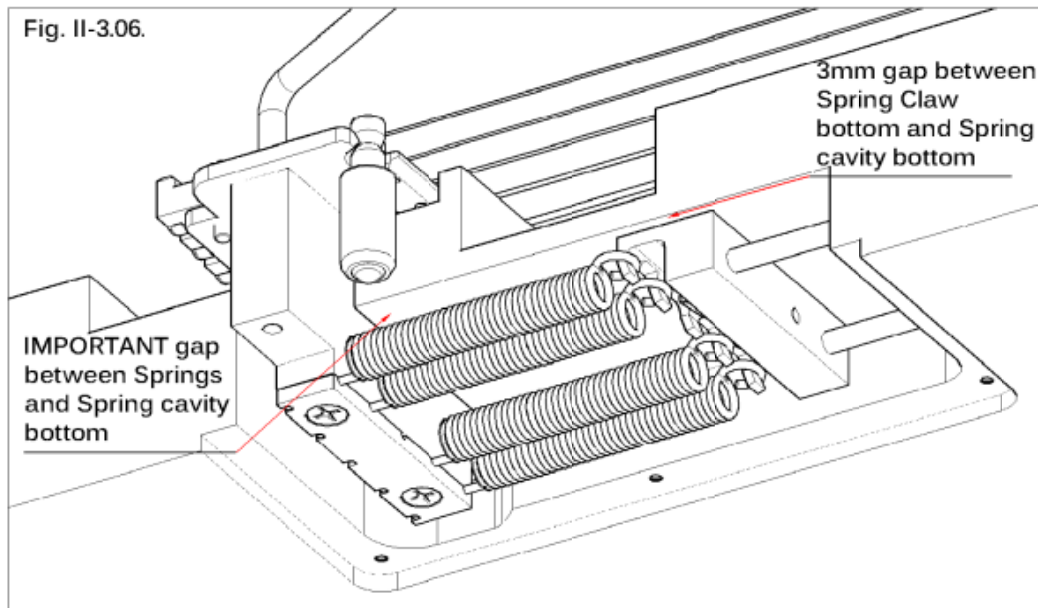


WARNING! Check the Baseplate knives and whether they are in the correct position (rest on the bottom of the conical walls of Pivot Studs). If they are not, just grab the FT36 Performante and position it with some little force.

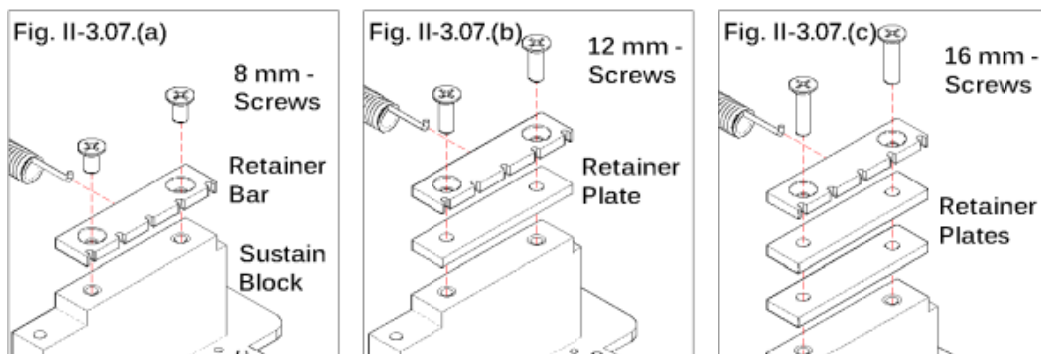
IMPORTANT NOTICE! Only after completing the next three steps you can install the rest of Tremolo Springs.

II-3.05. Once the Tremolo has setted with one spring, straighten the guitar and install the **Tremolo Arm** into the corresponding hole, until it reaches the bottom and then turn it a few turns.

II-3.06. Press the Tremolo Arm, so that the spring is stretched to the possible maximum. Check if the spring does not rest to the guitar body. Such a touch is extremely undesirable and must always be avoided. If the spring rests at the guitar body, you must install one or two (the second is optional) **Retainer Plates** under the Retainer Bar. Their installation is described in the next three sub-steps. If such a touch is missing, proceed directly to step II-3.08.



II-3.07a. In order to install an additional **Retainer Plate**, release the Tremolo Arm from the pressure and remove it. Turn the guitar face down and loosen, firstly the two Spring Claw Screws, then the Retainer Screws with up to 1.5 turns. Then carefully remove the Tremolo Spring, firstly on the side of the ear and then on the side of the hook. Gently turn the guitar by holding the Tremolo set. Remove the tremolo set of the guitar and place it on the Packaging box.



II-3.07b. Unscrew the two **Retainer Bar Screws** and remove the Retainer Bar. In its place install (one or two) of the optional Retainer Plates, on the bottom of the Sustain Block. Reattach the Retainer Bar above the Retainer Plate(s) and screw the correct **Retainer Bar Screws** pair.

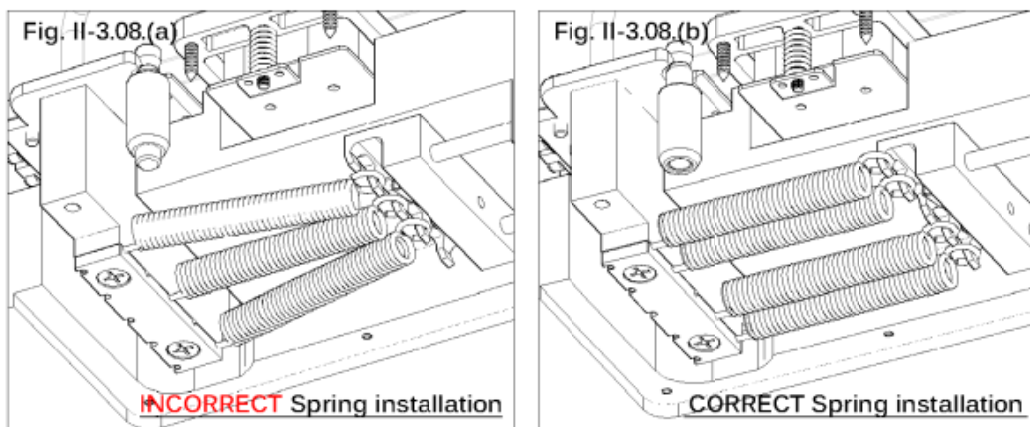
IMPORTANT NOTICE! The tremolo device is initially equipped without the additional Retainer Plate and it is installed by 8mm Screws.

- When installing an additional Retainer Plate, you **MUST** use the optional Retainer Bar Screws with a length of 12mm.
- When installing two Retainer plates, you **MUST** use the optional Retainer Bar Screws with a length of 16mm.

WARNING! Check that the correct Retainer Bar Screws are installed before installing the Tremolo set into the guitar body. If non-correct screws are installed, there is a serious risk of injury.

II-3.07c. Once the additional Retainer Plate(s) and the Retainer Bar have been correctly installed, repeat the steps from II-3.04. to II-3.07. Check that Tremolo Spring in the possible maximum stretched condition does not touch anything.

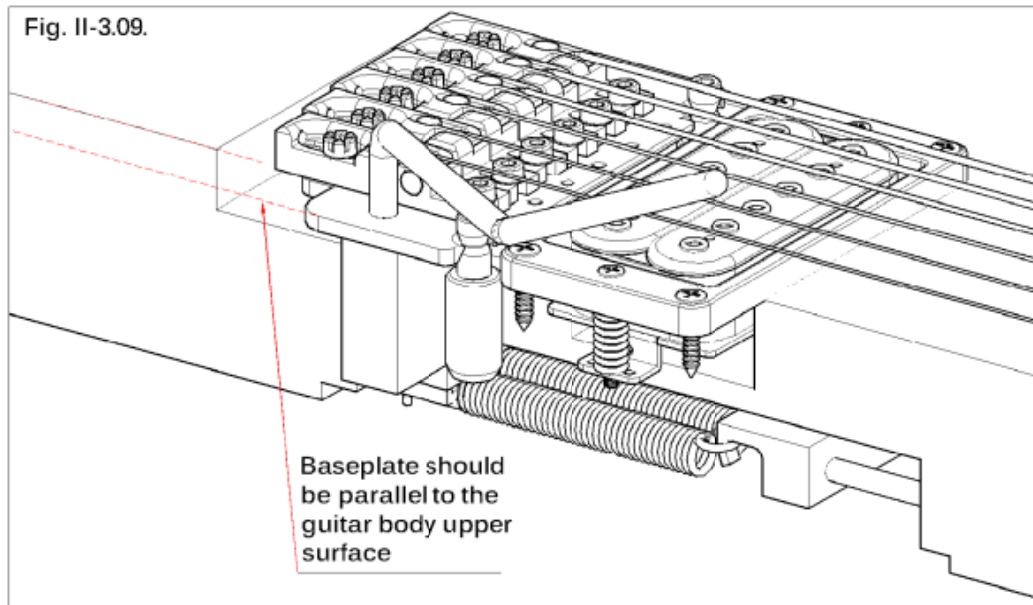
II-3.08. Unscrew the two Retainer Bar Screws by about 1.5 turns (but no more) and install **two** or **three** **springs** in the same way as described in Procedure II-3.04. Once they are correctly positioned at both ends, screw the two Retainer Bar Screws. The number of mounted springs depends on the guitar player's personal preference.



IMPORTANT NOTICE! *The more springs are installed, the more difficult it will be to push or pull the Tremolo Arm. In case it is quite tight (or rather light), at any time you can remove (or install) an additional Tremolo Spring.*

IMPORTANT NOTICE! *Do not install the Tremolo Springs in non-parallel positions. This leads to increased friction in the contact points (Spring ear and Spring Claw tooth). The Tremolo Springs is RECOMMENDED to be installed parallel to each other.*

II-3.09. Once the Tremolo springs have been installed (possibly not too tight), push the **Sustain Block** backward so that it stays perpendicular to the rear surface of the guitar body. Take the plastic or wooden small piece of the bar (with suitable thickness and width) and put it into the space between the Sustain Block and the opposite surface of the guitar body and release holding of Sustain Block. Watch the Tremolo Springs be at least a little stretched, so the Sustain Block always presses the bar to the opposite surface of the guitar body. Check that the upper surface of the Baseplate is parallel to the upper surface of the guitar body. If not, push again with one hand Sustain Block, and with the other insert thicker piece of bar. Check again whether the upper surface of the Baseplate is parallel to the upper surface of the guitar body. This procedure is repeated until parallelism occurs and the Tremolo set is positioned to the neutral position (Zero point). In this way, the further installation would be quite easy. If the Tremolo Springs are slightly tightened, screw the two Spring Claw Screws with the required number of turns so that the Sustain Block on the Tremolo set presses the plastic or wooden bar tight enough that it does not get out in the stages of strings installations and adjustments.



IMPORTANT NOTICE! Do not forget to leave enough space between the springs so you can push or remove the plastic or wooden bar from the gap between the Sustain Block and the opposite surface of the guitar body described in step II-3.09.

IMPORTANT NOTICE! Do not install the safety cover over the springs until all the adjustments have been made and the guitar is ready for use.

II-3.10. Turn the guitar face up and make sure the upper surface of the Baseplate is parallel to the upper surface of the guitar body. Unpack a **new set of strings** and arrange them at a convenient distance from you to lie down so they will be easy for installation.

IMPORTANT NOTICE! It is recommended (for your convenience) to use string sets with thicknesses from 8-38 to 10-46.

II-3.11. Unscrew **String Lock Screw** on the first string Saddle Assembly with 1 or 2 turns so that it can be easily put to the string into the hole, but not much more.

II-3.12. Check that the **Fine Tuning Screw** is unscrewed with half a turn.

II-3.13. Take the **first string** and cut it about 20-25mm from the ball end. Insert the cutted end of the string into the slot between the String Lock Insert and the front surface of the front slot, in the Rear Saddle, so that it reaches the restrictive step at the bottom of the slot. Make sure the string is positioned vertically and in the middle, in front of the String Lock Insert. Once you are sure that the string is properly positioned, screw the String Lock Screw tight enough without overdoing it. Try to pull the string so you can see that it is tightly locked and bend it towards in the direction of the the guitar head.

WARNING! Before locking the string, make sure it is pushed into the hole correctly and tightened enough. Otherwise, there is a serious risk of injury.

II-3.14. Take the **other end of the string** and pass it through the correct position in the Locking Nut, then into the Machine Head string hole. There are several ways to lock the string to the Machine Head, so use someone's additional help and screw the string. Tune the string to the correct tone by keeping attention Tremolo springs to be so tight enough so that the plastic bar does not pull out. Push the string well with your

finger just in front of the Rear Saddle and in front of the Locking Nut in order for the string to take its correct form and position. Check if the string passes properly through the Locking Nut. Then cut out the redundant part of the string above the Machine Head. Repeat carefully the last two steps for all other strings.

IMPORTANT NOTICE! Do not lock the strings in the Locking Nut before all the Tremolo Adjustments have been made. (Only fine tuning adjustment is required after locking the strings in the Locking Nut).

IMPORTANT NOTICE! After installing the new set of strings and after tuning them, it takes time for them to release so that after at least a few hours (usually one night), it is absolutely necessary to tune them up again. Use reliable tuners that will allow you to make a quick and accurate string tuning.

WARNING! NEVER change the string set just before a stage performance or a studio session.

II-3.15. The Locking Nut string lock procedure is described in the Adjustments section as the last step - Fine Tuning Adjustment.

II-4. ADJUSTMENTS

IMPORTANT NOTICE! Before starting any adjustments, make sure all Saddle Assemblies are positioned and fixed in the correct row and in the rear end position. This means that the front edge of the Saddle Mounting Screw Head is aligned with the front two sides of the String Saddle Assembly forks - see II-2.02).

IMPORTANT NOTICE! Since this section looks at the replacement of an old OFR tremolo, assuming all previous adjustments have been done accurately and correctly. This means that this instruction will not describe a truss rod adjustment or Machine Heads tightness.

II-4.01. Height Adjustment

II-4.01a. Check that Strings are tuned. Whether the plastic bar is in place and get the sheet of paper with the string height data you have previously measured and recorded (see II-2.01).

IMPORTANT NOTICE! Always before making Height Adjustment, you MUST tune the strings.

II-4.01b. If the strings are lower or higher than the recorded heights, adjust the height of the **Pivot Studs** by screwing or unscrewing until the data recorded for the previous setting is reached.

II-4.01c. Check string sounding, string by string, fret by fret, whether it sounds right, without buzz. If you adjusted the string height exactly as it had been with the previous adjustment, there should be no problem.

II-4.02. Intonation Adjustment

IMPORTANT NOTICE! The Intonation Adjustment procedure must be done using a reliable tuner.

IMPORTANT NOTICE! The Intonation Adjustment procedure must be done when you replace different string sets (with different string diameters) or replace string sets from different manufacturers. For the proper performance of the **FT36 Performante**, always make an Intonation check procedure, after changing the string sets, when tuning them. If necessary, proceed to the Intonation Adjustment procedure.

IMPORTANT NOTICE! Before proceeding with the Intonation Adjustment, make sure all Fine tuning screws are positioned correctly to perform the procedure (all of them are unscrewed half a turn from the fully tightened position - see II-2.02).

II-4.02a. Screw the **Adjustment Screw** into the upper rear threaded hole of the Rear Saddle of the first Saddle Assembly until the front wall rests in the head of the Fine Tuning Screw.

II-4.02b. Loosen the **Saddle Mounting Screw** a quarter of a turn so that the Saddle Assembly can slide freely.

II-4.02c. Adjust the string to the correct tone for the zero fret (nut position) and press 12th fret on the fretboard. If the tone is lower, unscrew the **Adjustment Screw** so that the Saddle Assembly moves slightly forward. Readjust the string tuning for zero fret and check the tone when 12th fret has been pressed again. If the tone is still lower, unscrew the Adjustment Screw a little so that the Saddle Assembly moves forward. This procedure is repeated several times until it reaches a position, where the 12th fret tone is exactly one octave higher than the tone from zero fret. Once you are sure that the Saddle Assembly is in the correct position, tighten the Saddle Mounting Screw to firmly lock the saddle.

IMPORTANT NOTICE! Intonation Adjustment **MUST ALWAYS** be carried out by starting from the Saddle Assembly's **REAR END POSITION**, moving it forward. Otherwise, screwing the Adjustment Screw is much harder and can cause the breakage of the string because in this way it is stretched.

II-4.02d. Unscrew Adjustment Screw 1-2 revolutions and make sure it is released. Fully screw the **Fine Tuning Screw** and then unscrew it with 2.0 turns. Adjust the string again. Check the tone, if it is the correct, repeat the same procedure for the other strings.

IMPORTANT NOTICE! The Intonation Adjustment is essential for the excellent performance of both the **FT36 Performante** and the instrument as a whole and **MUST** be done patiently and very precisely.

IMPORTANT NOTICE! While doing the Intonation Adjustment procedure, ensure that the Tremolo Springs are tightened enough so that the Sustain Block presses the plastic bar and prevents it from pulling being pulled out. (Base plate **MUST** be parallel to the guitar body.)

II-4.03. Tremolo Spring Adjustment

IMPORTANT NOTICE! Only after the Intonation Adjustment procedure is correctly done you can proceed to the current Spring Adjustment.

IMPORTANT NOTICE! Before proceeding with the Spring Adjustment procedure, make sure that all Fine tuning screws are positioned correctly in their neutral position (all Fine Tuning Screws are unscrewed 2.0 turns from tightened position). Also make sure that all strings are correctly tuned.

II-4.03a. Start unscrewing slowly and smoothly the **Spring Claw Screw** one after the other so that the Spring Claw stays perpendicularly to the springs. The unscrewing should continue until the Sustain Block has moved backward and the plastic bar release and pull out. Check the string tuning.

II-4.03b. Screw a little one of the two Spring Claw Screws in case all the strings tone are a bit lower. Check the string's tone again and make sure all strings are tuned correctly and the Baseplate is parallel to the guitar face.

II-4.04. Fine Tuning Adjustment

IMPORTANT NOTICE! Before proceeding to the Fine Tuning Adjustment procedure, make sure all Fine tuning screws are positioned correctly in their neutral position (all Fine Tuning Screws are unscrewed 2.0 turns of the tightened position). Also make sure that all strings are tuned correctly.

II-4.04a. Screw the Locking Nut Screws of the Locking Nut so that all the strings are tightly locked. Press once or twice the Tremolo Arm and make sure the strings are firmly locked.

II-4.04b. If some of the strings is not tuned correctly, use a Pick (or the Key Wrench $s=3.0\text{mm}$ or even your fingernail) and screw or unscrew the Fine Tuning Screw slightly. Check the string tune. This procedure is repeated for all strings. If the Locking Nut device is properly fabricated and the strings are locked tightly, Fine Tuning Screw adjustments would be minimal or none.

IMPORTANT NOTICE! Recommended (for your convenience) is to use Picks with a thickness between 0.7mm and 1.0mm.

IMPORTANT NOTICE! Do not forget if this procedure is performed on "cold strings", it will take some minor adjustments after a while playing. Fine tuning checks and adjustments are also required when the instrument is moved or transported between rooms (or places) with different temperature and / or humidity.

IMPORTANT NOTICE! Do not forget that if you use very old strings (or ones, for which you do not remember the installation date), there is a chance of faster string breaks and worse sound compared to a new string set. That's why we strongly recommend changing the guitar strings regularly. A very easy way to know when the string set is installed, is to write readable string change date of a small sticky sticker (3M, for example) and to stick it on the back side of the guitar head (around the factory serial number).

II-4.05. Tremolo Arm Adjustment

IMPORTANT NOTICE! The current procedure is very easy. The tightness of the Tremolo Arm depends on individual preferences.

II-4.05a. Insert the Tremolo Arm into the correct hole in the Baseplate, until it reaches the bottom.

II-4.05b. Screw the Tremolo Arm 2 turns, this will prevent unwanted escape of the Tremolo Arm at the most inappropriate moment. In this situation Tremolo Arm will be loose enough to always hang down. At the same time, it will not knock into the Sleeve, so it will be very precise when used.

II-4.05c. You can tighten the Tremolo Arm up to about 4 turns to achieve the desired tightness. In the fully tight position, the Tremolo Arm will stay in the desired position quite tight without moving itself in different directions.

IMPORTANT NOTICE! Do not overdo the tightening of the Tremolo Arm, as this may cause a defect in the device.

II-5. MAINTENANCE

IMPORTANT NOTICE! Maintenance procedures MUST be performed regularly. They are divided into two types - everyday (after session) and annual (or seasonal). In case of serious daily professional use of the musical instrument, they can also be made seasonally. It is very important to understand and

realize that the regular maintenance procedures helps you use the musical instrument for many years, which, in addition to looking like a new one, will keep sound quality the same as when you purchased it.

IMPORTANT NOTICE! *If you choose to replace any part of the **FT36 Performante**, please, always use original ones, because only in this case the quality and performance of the device are guaranteed.*

II-5.01. Daily (after session) Maintenance

II-5.01a. After **each playing session**, before putting the guitar in the hard case or hanging it to the wall, it is recommended that you perform this procedure. It will not takes you more than a minute, but the next time you get the instrument, you will see how it looks and sounds like as a new one.

II-5.01b. Take a piece of soft, clean and light **cotton cloth** (part of old T-shirt - 100% cotton is an acceptable solution) and wipe the strings from the Tremolo set to the Nut. Even just a few snaps are enough to remove most of the particles and dirt.

II-5.01c. With the same cotton cloth, but on the clean side, wipe the upper surface of the **Tremolo set** and the **Tremolo Arm**. Also wipe the front panel of the guitar body.

II-5.01d. Take a soft hair **paintbrush** wide of about 5 cm (or 2 "). Straighten the guitar and brush the face of the head around, and under, the Machine Heads and strings. Then brush the fingerboard and strings from the Nut to the Tremolo set. Brush with caution the Tremolo set, upper surface and around the Fine Tuning and Saddle Mounting Screws.

II-5.01e. Gently put the guitar into a hard case or hang it on the wall.

II-5.02. Annual (or seasonal) Maintenance

II-5.02a. Once a year, or when you have decided to change the strings, you may do this procedure. Make sure you have enough space (enough illumination as well) to arrange the parts of the tremolo system, as well as your instrument. It is recommended to place all parts and the instrument on a soft, clean, light and not very thick cotton cloth. This will protect them from possible unwanted scratches or even loss.

II-5.02b. Take the 3mm Key wrench and unscrew all Locking Nut screws. Uninstall all clamps. Arrange the parts on the previously prepared place. Also uninstall the Tremolo Arm.

II-5.02c. Uninstall the **Springs Cover** from the back of the guitar.

II-5.02d. Carefully insert the **plastic** or **wooden bar** between the Sustain Block and the opposite wall of the cavity. Loosen one of the strings, through Machine Head, until the Sustain Block is attached (or pressed) to the bar on the opposite side of the guitar body.

II-5.02e. Loosen all the strings by unscrewing **Machine Heads** and then carefully (one by one) unlock them from the Saddle Assembly by loosening the String Lock Screws with about 1 or 2 turns. Remove the strings so that they do not scratch the guitar surfaces.

II-5.02f. Turn the Guitar upside down and unscrew the two Spring Claw Screws, until you release the tension in the Tremolo Springs. You can also mark the exact position of the Spring Claw to save the time when install the back of the **FT36 Performante** to the guitar.

- II-5.02g. Uninstall the Tremolo Springs, make sure the Tremolo set does not fall out of the guitar body cavity.
- II-5.02h. Unscrew the **Cable Lug Screw** and remove the grounding cable aside without uninstalling the cable lug.
- II-5.02i. Unscrew the **Spring Claw Screws** and remove the **Spring Claw**.
- II-5.02j. Turn the guitar around and carefully uninstall the **Tremolo set**.
- II-5.02k. Unscrew **Pivot Studs** by pre-measuring and writing down their heights. Save it.
- II-5.02l. Put in the previously prepared **Packaging** Tremolo set.
- II-5.02m. Take the 3mm and 2.5mm Key wrenches and completely unscrew all **Fine tuning** and **Saddle Mounting screws**. Remove all Saddle Assemblies.
- IMPORTANT NOTICE!*** Carefully align all parts of the device to prevent losses. Pay special attention to the thin Shim Rings.
- II-5.02n. Take the 2.5mm Key wrench and unscrew all **String Lock Screws**. Also carefully remove the **String Lock Insert**.
- II-5.02o. Take a Screw driver and unscrew the two **Tremolo mounting Screw** to remove the Baseplate.
- II-5.02p. Remove the Sustain Block from the foam box and unscrew both **Retainer Bar Screws** to remove the Retainer Bar (and eventually Retainer Plates if fitted).
- II-5.02q. Optionally, you may also remove the **Tremolo Arm Sleeve, Washer** and **Spring** by using of the Tremolo Arm.
- IMPORTANT NOTICE!*** This procedure may not be carried out as there is a possible risk of the Tremolo set assembling of the Tremolo Arm Sleeve, Washer, and Arm Spring parts, not to be properly installed or lost.
- II-5.02r. Once all parts have been removed and arranged on the cloth, proceed to their washing.
- IMPORTANT NOTICE!*** Due to all metal parts being Stainless Steel, you can soak them into plastic basin for a reasonable amount of time (one to two hours or even less), and then wash them in a mild soap water (every Liquid Soup for dishwashing is appropriate).
- IMPORTANT NOTICE!*** Use a relatively soft sponge to avoid scratching the parts. After washing them, rinse them with clean cold water thoroughly well.
- IMPORTANT NOTICE!*** Always dry the parts when they are still wet, because if they are already dry it is possible to leave visible traces of water on them. To dry them, use a piece of soft, clean and light cotton cloth (part of old cotton T-shirt is an acceptable solution).
- II-5.02s. After all parts have been washed, dried and stacked, you can proceed to assemble the Tremolo device following the above mentioned procedures in reverse order. When the Tremolo set is fully assembled, you may proceed to the preparation procedures (II-2), installation (II-3) and settings (II-4).
- II-5.02t. If you followed correctly and patiently the procedures, Congratulations! In front of you (or in your hands) there is a guitar equipped with the Double locking Tremolo system of the FT36 Performante, which looks the same way as you installed it for the first time.

III. Instruction for UNINSTALLING, PREPARING, INSTALLATION, ADJUSTMENTS AND MAINTENANCES

(retrofit Fender (Stratocaster Synchronized 2-Point Tremolos (74.2mm or 2.92”), Ibanez (FAT-10, FAT-20, SAT-30, SAT Pro series) and many more similar so called “Vintage” 2-Point tremolos)

IMPORTANT NOTICE! Before you proceed to replacing your old non-locking 2-Point 74mm tremolo device, it is **REQUIRED**, that during the preparation phase of installing the **FT36 Performante**, to place all Saddle Assemblies on the **FIRST ROW** end position. This means that the front edge of the Saddle Mounting Screw Head to be aligned with the front two sides of the String Saddle Assembly forks.

IMPORTANT NOTICE! If you are replacing an unlockable tremolo, it is recommended to consider installing an additional Locking device behind the Nut, so that the strings can be locked at the both ends. Only in this way will you be able to use the full potential of the **FT36 Performante**.

IMPORTANT NOTICE! If you are experiencing difficulties or misunderstanding the instructions, you can always view the materials related to the installation of the **FT36 Performante** on our website at www.tremoline.com in the Technical support section.

Notes:

Fender®, Strat®, Stratocaster® are registered trademarks of Fender Musical Instruments Corporation.

Floyd Rose® is a registered trademark of Floyd Rose Inc. AP International.

Ibanez® is a registered trademark of Hishino Gakki Co., Ltd.

Schaller®, Lockmeister® are registered trademarks of Schaller GmbH.

Gotoh® is a registered trademark of Gotoh Gut Co., Ltd.

GraphTech® is a registered trademark of Graph Tech Guitar Labs.

All parts of the device are RoHS 2 (Directive 2011/65/EU) compliant.

All parts of the device are biocompatible - ISO 10993-10 compliant.

For more information you can visit our website www.tremoline.com.

The company reserves the right to make changes without prior notice.

TREMOLINE Ltd.

11 Dragovitza str., 1505 Sofia, Bulgaria, EUROPE

www.tremoline.com

e-mail: info@tremoline.com