

kaabo®

USER MANUAL

Skywalker



CATALOGUE

Product Introduce	1
Safety Instruction	15
Open & Fold	16
Basic Operation	18
Take The First Ride	21
Daily Maintenance	23
FAQS	24
Warranty	25
Memo	26

01 / PRODUCT INTRODUCE

► PRODUCT DIAGRAM 8



- | | | |
|---------------------|-----------------------|--------------------|
| [1] Handle | [2] Light&horn Switch | [3] Display |
| [4] Folding Lever | [5] T Bar | [6] Lock Nut |
| [7] Main Tube | [8] Light&Horn | [9] Protection Pin |
| [10] Shock Absorber | [11] Pedal | [12] Rear Light |
| [13] 8" Tire | [14] Kickstand | [15] Motor |

► SPECIFICATION 8

Configuration	36V 10.4AH	36V 21AH	48V 13AH
Max. Range	28-32 km	65-70 km	45-50 km
Max. Speed	38 km/h		
Charging	3-5 h	6-8 h	4-6 h
Motor	350 w		500 w
N.W	16 kg	18 kg	19.3 kg
Brake	Rear Drum Brake + Electronic Brake		
Shock Absorber	Front Shock Absorber		
Tire	8.0 x 2.0 Tires		
Open Size	1050 x 560 x 1150 mm		
Folding Size	1100 x 190 x 320 mm		
Package Size	1070 x 260 x 430 mm		

* The specification can be changed by manufacturer to meet the requirements and laws of different countries and regions.

* The distance can be affected by loaded weight, wind direct (wind speed), riding surface density, slope and tire condition.

► PRODUCT DIAGRAM 8H



- | | | |
|---------------------|-----------------------|--------------------|
| [1] Handle | [2] Light&horn Switch | [3] Display |
| [4] Folding Lever | [5] T Bar | [6] Lock Nut |
| [7] Main Tube | [8] Light&Horn | [9] Protection Pin |
| [10] Shock Absorber | [11] Pedal | [12] Rear Light |
| [13] 8" Tire | [14] Kickstand | [15] Motor |

► SPECIFICATION 8H

Configuration	36V 10.4 AH	36 V 21 AH	48 V 13 AH
Max. Range	28 - 32 km	65 - 70 km	45 - 50 km
Max. Speed	35 km/h		38 km/h
Charging	3 - 5 h	6 - 8 h	4 - 6 h
Motor	350W		500W
N.W	17.3 kg	19.4 kg	18.6 kg
Brake	Rear Drum Brake + Electronic Brake		
Shock Absorber	Front and Rear Shock Absorber		
Tire	8.0 x 2.0 Tires		
Open Size	1070 x 560 x 1150 mm		
Folding Size	1060 x 190 x 320 mm		
Package Size	1120 x 260 x 430 mm		

* The specification can be changed by manufacturer to meet the requirements and laws of different countries and regions.

* The distance can be affected by loaded weight, wind direct (wind speed), riding surface density, slope and tire condition.

► PRODUCT DIAGRAM 8S



- | | | |
|---------------------|-----------------------|--------------------|
| [1] Handle | [2] Light&horn Switch | [3] Display |
| [4] Folding Lever | [5] T Bar | [6] Lock Nut |
| [7] Main Tube | [8] Light&Horn | [9] Protection Pin |
| [10] Shock Absorber | [11] Pedal | [12] Rear Light |
| [13] 8" Tire | [14] Kickstand | [15] Motor |

► SPECIFICATION 8S

Configuration	48 V 13 AH
Max. Range	40 - 45 km
Max. Speed	40 km/h
Charging	4 - 6 h
Motor	800 w
N.W	22 kg
Brake	Rear Disc Brake + EABS Electronic Brake
Shock Absorber	C Shock Absorption
Tire	85mm Solid Tire
Open Size	1100 x (520 ~560) x 1150 mm
Folding Size	1080 x 190 x 350 mm
Package Size	1120 x 260 x 430 mm

* The specification can be changed by manufacturer to meet the requirements and laws of different countries and regions.

* The distance can be affected by loaded weight, wind direct (wind speed), riding surface density, slope and tire condition.

► PRODUCT DIAGRAM 10



- | | | |
|---------------------|-----------------------|--------------------|
| [1] Handle | [2] Light&horn Switch | [3] Display |
| [4] Folding Lever | [5] T Bar | [6] Lock Nut |
| [7] Main Tube | [8] Light&Horn | [9] protection pin |
| [10] Shock Absorber | [11] Pedal | [12] Rear Light |
| [13] 10" Tire | [14] Kickstand | [15] Motor |

► SPECIFICATION 10

Configuration	36 V 10.4 AH	36 V 21 AH	48 V 15.6 AH
Max. Range	28 - 32 km	65 - 70 km	50 - 55 km
Max. Speed	38 km/h		42 km/h
Charging	3 - 5 h	6 - 8 h	4 - 6 h
Motor	400 w		500 w
N.W	17.3 kg	19.3 kg	18.6 kg
Brake	Front and Rear Disc Brake + Electronic Brake		
Shock Absorber	No		
Tire	10.0 x 2.25 / 10.0 x 2.5 tires		
Open Size	1135 x 560 x 1200 mm		
Folding Size	1120 x 240 x 360 mm		
Package Size	1200 x 300 x 450 mm		

* The specification can be changed by manufacturer to meet the requirements and laws of different countries and regions.

* The distance can be affected by loaded weight, wind direct (wind speed), riding surface density, slope and tire condition.

► PRODUCT DIAGRAM 10H



- | | | |
|---------------------|-----------------------|--------------------|
| [1] Handle | [2] Light&horn Switch | [3] Display |
| [4] Folding Lever | [5] T Bar | [6] Lock Nut |
| [7] Main Tube | [8] Light&Horn | [9] Protection Pin |
| [10] Shock Absorber | [11] Pedal | [12] Rear Light |
| [13] 10" Tire | [14] Kickstand | [15] Motor |

► SPECIFICATION 10H

Configuration	36 V 10.4 AH	36 V 21 AH	48 V 15.6 AH
Max. Range	28 - 32 km	65 - 70 km	50 - 55 km
Max. Speed	38 km/h		42 km/h
Charging	3 - 5 h	6 - 8 h	4 - 6 h
Motor	400 w		800 w
N.W	19.6 kg	21.7 kg	21.4 kg
Brake	Front and Rear Disc Brake + Electronic Brake		
Shock Absorber	Front and Rear Shock Absorber		
Tire	10.0 x 2.25 / 10.0 x 2.5 tires		
Open Size	1186 x 560 x 1200 mm		
Folding Size	1170 x 240 x 360 mm		
Package Size	1240 x 300 x 430 mm		

* The specification can be changed by manufacturer to meet the requirements and laws of different countries and regions.

* The distance can be affected by loaded weight, wind direct (wind speed), riding surface density, slope and tire condition.

► PRODUCT DIAGRAM 10S



- | | | |
|---------------------|-----------------------|--------------------|
| [1] Handle | [2] Light&horn Switch | [3] Display |
| [4] Folding Lever | [5] T Bar | [6] Lock Nut |
| [7] Main Tube | [8] Light&Horn | [9] Protection Pin |
| [10] Shock Absorber | [11] Pedal | [12] Rear Light |
| [13] 10" Tire | [14] Kickstand | [15] Motor |

► SPECIFICATION 10S

Configuration	48 V 23.4AH	60 V 23.4 AH
Max. Range	80km	90 km
Max. Speed	50 km/h	60 km/h
Charging	12 h (2A charging) 6 h (4A charging)	12 h (2A charging) 6 h (4A charging)
Motor	800 w	1200 w
N.W	23.5 kg	25 kg
Brake	Front and Rear Disc Brake + Electronic Brake	
Shock Absorber	Front Type C Shock Absorber Rear Common Shock Absorber	
Tire	10.0 x 2.25 / 10.0 x 2.5 tires	
Open Size	1208 x 560 x 1200 mm	
Folding Size	1220 x 230 x 380 mm	
Package Size	1260 x 300 x 470 mm	

* The specification can be changed by manufacturer to meet the requirements and laws of different countries and regions.

* The distance can be affected by loaded weight, wind direct (wind speed), riding surface density, slope and tire condition.

► PRODUCT DIAGRAM 10S+



- | | | |
|---------------------|-----------------------|--------------------|
| [1] Handle | [2] Light&horn Switch | [3] Display |
| [4] Folding Lever | [5] T Bar | [6] Lock Nut |
| [7] Main Tube | [8] Light&Horn | [9] Protection Pin |
| [10] Shock Absorber | [11] Pedal | [12] Rear Light |
| [13] 10" Tire | [14] Kickstand | [15] Motor |

► SPECIFICATION 10S+

Configuration	48 V 23.4 AH	60 V 23.4 AH
Max. Range	80 km	120 km
Max. Speed	60 km/h	
Charging	12 h (2A charging) 6 h (4A charging)	12 h (2A charging) 6 h (4A charging)
Motor	800 w x 2	1000 w x 2
N.W	29 kg	30.5 kg
Brake	Front and Rear Disc Brake + Electronic Brake	
Shock Absorber	Front Type C Shock Absorber Rear Common Shock Absorber	
Tire	10.0 x 2.25 / 10.0 x 2.5 Tires	
Open Size	1208 x 560 x 1200 mm	
Folding Size	1220 x 230 x 380 mm	
Package Size	1240 x 300 x 430 mm	

* The specification can be changed by manufacturer to meet the requirements and laws of different countries and regions.

* The distance can be affected by loaded weight, wind direct (wind speed), riding surface density, slope and tire condition.

02 / SAFETY INSTRUCTION

► Tips

This Chapter is very important. Please read carefully and understand all the instruction. We will not be responsible for any property loss, casualties, accidents, legal disputes caused by violation of the safety instructions on chapter.

► Safety Instruction



1. Do not drive in rainy days.
2. Do not repair by yourself, electric shocks can occur.
3. Please abide by the local road traffic law.
4. Do not acrobatics.
5. One scooter for one person only.
6. Better to wear safety protective equipments such as a helmet, gloves, elbow and knee pads when ride.
7. Please practice on open ground first, and then ride on the road.
8. Adjust to a suitable height to avoid injury.
9. Suggest to charge six hours before the first time to ride the scooter.
10. Do not cut off the power when scooter is running.
11. Do not climb a step higher than 3cm to avoid turning over and possible injury.
12. Use and storage scooter temperature range is -5°C to 50°C.
13. If left a long time mo use of the scooter, charge it once every month to maintain the longevity if the battery.
14. Do not ride in puddle deeper than 5cm or avoid sprayed directly by water in case of motor or electrical faults.
15. Keep feet on pedal when the scooter is run tube.



Please do not exceed maximum speed for local traffic requirements when you driving this equipments, otherwise there may be danger!

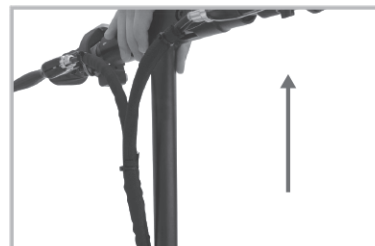
03 / OPEN FOLD

► Open



Step1:

Kickdown the lever to unfold the scooter. Put the safety pin to right position to lock it



Step3:

Adjust the height by open the locking nut and move the main tube up or down.



Step2:

Pull the T-tubes to the left and right side.



Step4:

Lock the nut.



Before driving, please make sure the folding lock is locked, this is very important !

► Fold



Step1:

Switch off



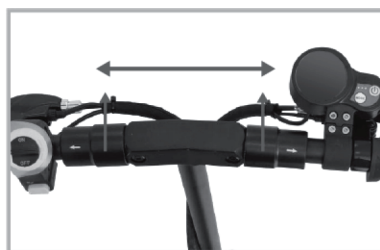
Step3:

Fold the handles.



Step5:

Withdraw the extension



Step2:

Pull T-tubes to the left and right sides respectively.



Step4:

Open the locking nut.



Step6:

Unlock the protection pin. kick down the folding lever and push the handlebar forward to fold the scooter.
Always keep protection pin in position when the scooter is unfold

04 / BASIC OPERATION

► Speed Control

When the power is on ,press the power switch and then the MODE button, the screen will show the level of speed. press Mode to change the Level (L1,L2,L3).

► Power Switch

Press the power switch for 3 seconds and the LCD panel will light up, power on now.If the scooter left 90 second unmoved, power will be off automatically.

► Power Indicator

Small rectangles indicates battery power.



Do not wait to change until battery is fully running out. Change the scooter timely when there is only one rectangle or two left to avoid damage of battery.

/ DISPLAY & KEY SETTINGS

Driving Mode Selection



Located underneath the main display on the right side of the handle bar you can find two switches to configure driving modes:

The ECO/TURBO switch regulates the power of your scooter. By pressing down the button, ECO mode is activated which will reduce torque and top speed to maximize range. When the button is not pressed, TURBO mode is activated and there is no restriction of power.

The SINGLE/DUAL switch toggles single or dual motor drive. By pressing down the button DUAL motor drive is activated. When the button is not pressed, SINGLE (rear) motor drive is activated.

For Maximum range, select ECO mode and SINGLE motor drive. For maximum power and speed, select TURBO mode and DUAL motor drive.

Display Settings

Scooter is equipped with the following display:



Gear change. To change the gear (1=slow, 2=medium, 3=fast), while the scooter is powered ON, press the POWER button to enter gear setting mode. Press MODE to switch between gears. To return to operating mode either press POWER or wait for 2 seconds.

1. Speedometer. Shows the speed at which you are travelling.
2. Battery Indicator. Charge your scooter frequently, do not let it run out of battery. As a rough guideline, charge at or below 2 bars.

3. Power Button. To turn the scooter on or off press button for 2 seconds.
4. Accelerator. Pull to accelerate. The stronger you pull, the faster it accelerates. The scooter is delivered in “Non-Zero Start” setting (Kick-And-Go is ON), i.e. the accelerator only works if the scooter is already in motion.
5. Mode Button. Press to select various display options:

MODE	COMMENT
TIME	Time since powering on the scooter.
TRIP	Distance travelled since powering on the scooter.
ODO	Total distance travelled.
VOL	Current battery voltage.
CH2:00	Charging mode. Time (2 hours) scooter stays ON (overrides auto-switch off) so you can use display's USB port to charge e.g. your phone.

Detailed P-settings mode. To access P-settings to make various advanced changes, press POWER [3] and MODE [5] simultaneously for 2 seconds. Cycle through the P-settings using the MODE button. To select a P-setting in order to make changes press the POWER button. Change the value (up or down) using the MODE (Up) and POWER (Down) buttons. To return to the P-settings menu after changing a value, wait 2 seconds. To return to operating mode, wait a further 2 seconds. Only

P-SETTINGS	
P0	Tire diameter .
P1	Controller shut-down voltage. Default set to 52V .
P2	Motor magnetic pole setting. Default is 30. Do not change.
P3	Speed signal selection. Default is 0. Do not change.
P4	Distance / speed unit. 0=km, 1=miles
P5	Start setting. 1=non-zero start (Kick-and-Go), accelerator won't work if scooter not in motion; 0=immediate start (CAUTION while using this!)
P6	Cruise control. 0=cruise control OFF, 1=cruise control ON.
P7	Initial acceleration. 0=strong, 1=soft.
P8	Electric (regenerative) braking (E-ABS). 0=E-ABS off, 1=E-ABS on
P9	Speed limit as % of top speed, i.e. 100=no speed limit.
PA	Clear total distance travelled (ODO).
PB	Scooter auto-turn off time in minutes.
PC	Display brightness (1=low, 3=high)

05 / TAKE THE FIRST RIDE

► Start

You should choose a right place when first riding, which is outdoors and should be flat, not be slippery and smooth, without obstacles. Spread the scooter and adjust the T-tube to the appropriate height.

► Driving

1. Press power switch to start.
2. Put one foot on the front section of the pedal and other foot on the ground. Boost yourself forward by the foot on the ground to start riding. Slightly pull the accelerator and tilt body forwards.
3. When the scooter starts to go forward, get your feet both on pedal. The harder you press the accelerator, the quicker you will be.

► Parking

Slightly and gradually brake to cut power and slow down.
Do not brake hard, otherwise may lead to tire attrition, or suffer a sudden loss of power and fall down.

► Battery & Charger

Every piece of the scooter is equipped with specialized lithium battery and intelligent charger, so do not adopt other brand's. Other types of battery are not suitable to the scooter's charger.

► Lithium Battery

It is time to charge the scooter when the battery meter flickers or there is only one bar of power left. If left the scooter long time no use, please charge it once a month at least, otherwise the battery may become unusable.

► Charger

After scooter fully charged, please unplug power supply in time.

► Instruction of Charging

1. Insert the charging plug into the charge hole of the scooter first and then plug the other end to the AC supply.
2. It is under charging when the indicator light of the charger shows red. And when the red light turns to green. It means the scooter is fully charged.
(It is suggested that to charge one more hour to guarantee the range and endurance)

06 / DAILY MAINTENANCE

► Scooter T-tubes

Re-lubricate the T-tubes once in six months.



Do not use WD-40 to lubricate the product components.

► Tire

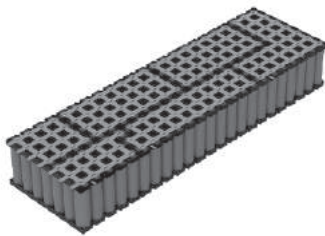
Skywalker 10s both tire are pneumatic tire.

► Brake

When the braking performance degradation occurs, adjust the regulator (nut) in the rear wheel in order to achieve the required sensitivity.

► Battery

The lithium battery of scooter is able to recharge for 1000 times.
The battery needs changing when range per full charge shortens sharply.



07 / FAQs

► Checking List

When the scooter can not work normally, please check the following list.

- Power is on.
 - There is surplus electricity.
 - Brake is unstuck.
 - All the hubs and connectors are clean and in accurate link.
- If all the above are yes and the scooter still do not work, please consult with people involved.